

Historic, Archive Document

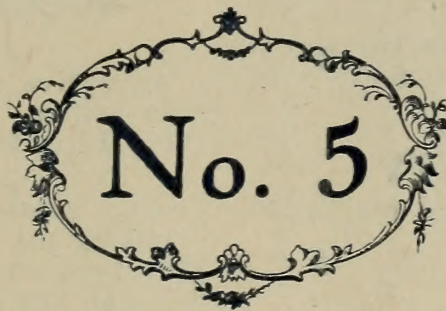
Do not assume content reflects current scientific knowledge, policies, or practices.

FLORISTS'

Wholesale Price List

LIBRARY,
U. S. Department of Agriculture,
Washington, D. C.

of Plants, Bulbs,
Seeds, Etc.



From Date to April 1st
1912

The Storrs & Harrison Co.

Lake County, Painesville, Ohio

TERMS OF SALE

Orders from unknown correspondents must be accompanied by cash or satisfactory references. Three will be furnished at dozen rates, and five at 100 rates, if orders amount to \$3.00 or more. All goods delivered at Express Office or Depot here. No charge for packing or packages.

Orders to be sent C. O. D. must be accompanied by cash to one-fourth of the value of goods ordered, to guarantee acceptance.

All perishable plants and bulbs ordered shipped by freight will be properly packed and delivered to transportation company here. Consignee must then assume all responsibility as to damage by heat, frost or delay.

For wholesale rates of Fruit Trees, Vines, etc., and Hardy Ornamentals of all classes, see our Trade List No. 4.

On seeds in packets, a discount of 50 per cent. will be made from the prices in Catalogue No. 2. Prices quoted are for plants from 2½-inch pots, except noted.

CATALOGUES

We issue the following catalogues (send for copy if you did not receive them) free to the trade:

No. 1. Descriptive Catalogue—Fruit and Ornamental, Deciduous and Evergreen Trees and Shrubs, Small Fruits, Grape Vines, Roses, Hardy Plants, etc.

No. 2. Spring Retail Catalogue—Full Line Flower and Vegetable Seeds, Greenhouse, Bedding and Hardy Plants, Roses, Shrubs, Vines, Trees, etc. Issued in January.

No. 3. Fall Retail Catalogue—Bulbs, Winter Blooming and Hardy Plants, Shrubs, Trees, etc. Issued in August.

No. 4. Wholesale Trade List for Nurserymen, Dealers and Florists—Fruit and Ornamental Trees, Shrubs, Vines, etc. Issued semi-annually, January and August.

No. 5. Florists' Wholesale Price List. (This one.)

GENERAL COLLECTION of PLANTS for FLORISTS

ABUTILON—Eclipse

The odd and striking variegation on the leaves of this variety make them very attractive in baskets and vases. \$3.50 per 100.

ABUTILONS IN VARIETY

Large flowered Abutilons in pink and red. \$3.50 per 100.

ACALYPHAS

Marginata—Dark olive brown, margined rose; tooth edged. \$4.00 per 100.

Sanderi—Bright green foliage with pendant crimson flowers. \$4.00 per 100.

Triumphans—Crisp ovate pointed leaves of light red, fantastically marbled in darker shades; like an immense autumn leaf. \$4.00 per 100; \$30.00 per 1000.

ACHYRANTHES

Stand drouth and sun better than Coleus, and foliage is always bright and clean.

Brilliantissima—Ruby red, intensely bright. This is the brightest and best foliage plant for summer bedding we have been able to find. Stands sun and storm better than a Coleus and is more strikingly handsome. \$3.00 per 100; \$25.00 per 1000.

Emersoni—Lance leaved; glittering wine-red. \$3.00 per 100.

McNally—Bright green, yellow veined, red stemmed. \$3.00 per 100.

AUCUBA JAPONICA—Viridis

Handsome decorative plants, with shiny green leaves well set with clusters of good sized scarlet berries. Are very useful for holiday trade, and hold their showy fruits well into spring. Bushy plants, 24 inch high, \$1.00 each; \$10.00 per dozen.

AUCUBA JAPONICA—Punctata

(Gold Dust Plant.)

Attractive foliage of dark green, thickly dusted with yellow. Very bushy plants 15 to 18 inch, 50c each; 18 to 20 inch, heavy, 75c each.

ALLAMANDA WILLIAMSI

One of the few yellow flowered hot house plants. May be used as a pot plant sale subject. Strong 2½ inch pot plants, \$6.00 per 100.

ALTERNANTHERA

Rosea Nana, Aurea, and Parychoides Major—\$2.50 per 100; \$20.00 per 1000.

Carroll Park, Prospect Park, Sieboldi, Versicolor—\$3.00 per 100; \$25.00 per 1000.

AGERATUMS

Princess Pauline—Body of flower white, with light blue stamens. \$2.50 per 100.

Stella Gurney—Very dwarf, intense blue. \$3.00 per 100.

Tapis Blue—Still demanded in quantity; we find it one of the best blues. \$2.50 per 100.

White Cap—Pure white. \$2.50 per 100.

ANTHERICUM VARIEGATUM

2½-inch pots, \$3.00 per 100.

4-inch pots, \$8.00 per 100.

ASPARAGUS PLUMOSUS NANUS

2½-inch pots, \$3.00 per 100; \$25.00 per 1000.

3-inch pots, \$6.00 per 100.

4-inch pots, \$12.00 per 100.

Seedlings from flats, \$10.00 per 1000.

ASPARAGUS SPRENGERI

2½-inch pots, \$2.50 per 100; \$22.00 per 1000.

5-inch pots, long tops, \$15.00 per 100.

No. 5 FLORISTS' WHOLESALE.

PLEASE TAKE THIS OUT AND USE IN ORDERING. ADDRESS:

The Storrs & Harrison Company,

PAINESVILLE, LAKE COUNTY, OHIO.

Your Name,

Post-Office,

Express Office, (If different from P. O.)

County of State of Date 1912.

Amount enclosed, \$

Quantity

NAMES OF BULBS, PLANTS OR SEEDS WANTED.

Price

Amount carried over.

Quantity

NAMES OF BULBS, PLANTS OR SEEDS WANTED.

Price

Amount brought over.



FLOWERS OF AZALEA MOLLIS.

AZALEA MOLLIS

Fine for forcing, easily managed and sell on sight.

12 to 15 inches high, well set with buds, \$25.00 per 100.

15 to 18 inches high, well set with buds, \$35.00 per 100.

ARAUCARIA EXCELSA

(May Delivery.)

	Each
6 to 8 inches high, 2 to 3 tiers	\$.35
8 to 10 " " " 3 "45
12 to 14 " " " 3 to 4 "60

BAY TREES—(Laurus Nobilis)

(May 1st delivery.)

We offer a few of the most satisfactory sizes in standard, half-standard and pyramidal forms of this valuable decorative plant—all especially good values.

Standard—Stems about 48 inches high, diameter of crown about 26 inches, \$6.00 each; stems about 48 inches high, diameter of crown about 30 inches, \$8.00 each.

Half-Standard—Stems about 30 inches high, diameter of crown 22 inches, \$5.00 each. Stems 30 to 36 inches high, diameter of crown 26 inches, \$7.00 each.

Pyramidal—Five feet high, 24 inch diameter at base, \$6.00 each.

TUBEROUS ROOTED BEGONIAS

Due to unfavorable growing season in Belgium, tuberous Rooted Begonias will not be so large as we usually deliver, but are of high quality and will give perfect satisfaction.

Best Single Named Colors—White, pink, Per 100 scarlet, crimson and yellow.....\$2.50

Best Single Mixed 2.25

Best Double Named Colors—White, pink, scarlet, crimson and yellow..... 4.50

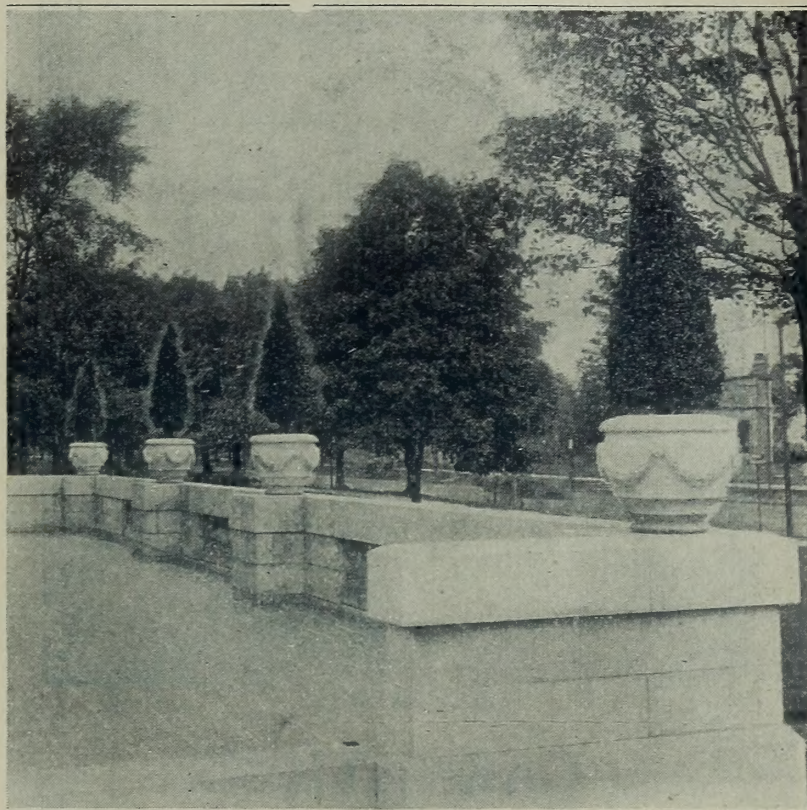
Best Double Mixed Colors..... 4.25

Single Frilled Tuberous Rooted Begonias—Beautiful flowers with wavy, crimped edges. Six separate colors—scarlet, pink, white, yellow, carmine and orange. \$1.00 per dozen; \$7.00 per 100.

BEGONIAS—Flowering

	Per 100
Alba Picta. Argentea Guttata.....	\$ 3.00
Alba Picta Rosea.....	4.00
Corallina Lucerna	10.00
Dewdrop	3.00
Erfordia. Erfordia Superba	3.00
Gracilis Luminosa	4.00
Marguerite	3.00
M. de Lesseps	3.00
Manicata Aurea—Nicely colored, 3-inch.....	8.00
Nitata	4.00
Otto Hacker	5.00
President Carnot	4.00
Purity	3.00
Thurstoni	5.00
Vernon. Vulcan	3.00
Warscewici	5.00

BOXWOOD



We have an unusually fine lot of Boxwood this year, nicely shaped and in prime condition. Grand specimens for any decorative purpose—store, conservatory, porch or lawn.

BUSH SHAPE.

12 inches high	30c	30 inches high	\$1.50
18 inches high	45c	36 inches high	2.00
24 inches high	\$1.00		

PYRAMIDAL SHAPE.

24 inches high	\$1.00	36 inches high	\$2.00
30 inches high	1.50	42 inches high	3.00

GLOBE SHAPE.

Perfect globes which have been carefully trained and are superb specimens. 18 by 18 inches at \$3.00 each.

BOUGAINVILLEA WM. K. HARRIS

A striking new variety which adds greatly to the list of decorative plants. Its habit is excellent; the foliage plentiful and compact, a rich green beautifully variegated with marblings of creamy white. 3-inch pot plants, \$20.00 per 100; 5-inch pots, 50c each.



CEDAR PLANT TUBS

Substantially made of White Cedar, painted green, banded with welded iron hoops, the two largest size with handles.

	Inside Diameter.	Length of Staves.	Each.
No. 1.....	8 inch	x 8 inch.....	\$.30
No. 2.....	9 "	x 9 "	.35
No. 3.....	10 "	x 11 "	.40
No. 4.....	10½ "	x 10 "	.45
No. 5.....	12 "	x 13 "	.50
No. 6.....	13 "	x 15 "	.60



ENCHANTRESS.

CARNATIONS

(Prices quoted are for plants from pots, either 2-inch or 2¼-inch.)

- Benora** (Fisher) — A new variegated Carnation; early, extremely free, large flowered, full and of superb form. Clear white, penciled with bright red. Stems long, stiff and wiry; and calyx exceptionally firm. \$12.00 per 100.
- Beacon**—Very productive; grand constitution and a free continuous bloomer. A brilliant scarlet at its best in dark weather, and a very desirable shade. In stem, size of bloom, habit of growth and freedom of bloom we find it without a peer. \$3.00 per 100; \$25.00 per 1000.
- Enchantress**—Exquisite daybreak pink. The largest flowered Carnation on the market. \$3.00 per 100; \$25.00 per 1000.
- Gloriosa**—A magnificent shade of pure light pink, slightly darker than Pink Delight, without the salmon cast. Early, free and continuous bloomer. Large flower, full center and a good keeper. \$1.00 per dozen; \$6.00 per 100.
- Pink Delight**—An extremely free blooming variety of easy growth, and great popularity. Color deeper and brighter than Enchantress. \$6.00 per 100.

Rose Pink Enchantress — Is filling the want of a rose-pink shade and proving one of the best money makers. Good producer and as easily handled as Enchantress. \$3.00 per 100; \$25.00 per 1000.

White Perfection—Has given general satisfaction; a good sized white, very free, strong and continuous bloomer. Will be grown extensively again. Has the good old fashioned clove fragrance. \$3.00 per 100; \$25.00 per 1000.

White Wonder—A seedling of White Perfection, claimed to be much better in every way. Flowers larger, stem stronger, and one-third more productive. Easy to root, flowers early and continuously, from early until late. \$1.00 per dozen; \$6.00 per 100.

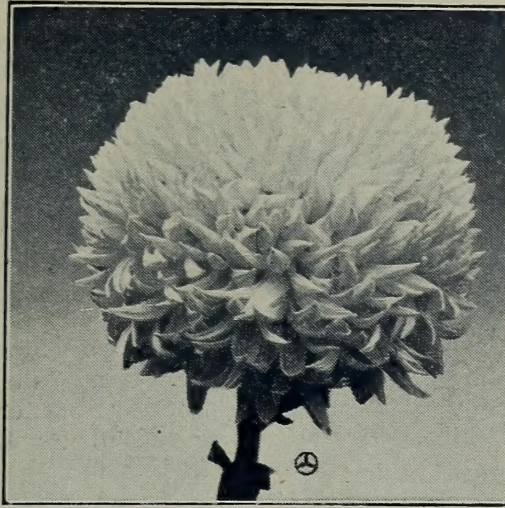
CHRYSANTHEMUMS

A COLLECTION OF GOOD CUT-FLOWER VARIETIES

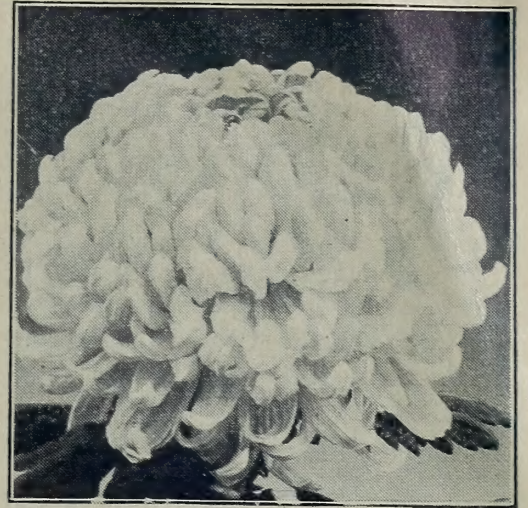
- Advance** (Smith)—Pure white when fully expanded, showing a creamy center when semi-developed. This is one of the earliest large white varieties known. \$7.00 per 100.
- A. J. Balfour**—A large flowered Japanese of deep rose-pink color, broad thick petals.
- Clementine Touset**—One of the finest early whites, styled "Early Chadwick," which it closely resembles in color.
- Col. D. Appleton**—Fine golden yellow for exhibition or market. \$3.50.
- Glory of the Pacific**—One of the best early pinks.
- Golden Glow**—Probably the very earliest yellow. Velvety golden-yellow, with very good stems.
- Golden Wedding**—Bright yellow. \$3.50.
- Intensity**—Brilliant crimson, petals reflexed; best late red.
- Ivory**—Best known early white, for cutting or pots.
- Jeannie Nonin**—For real late whites this has no peer.
- Major Bonnaffon**—Still the most extensively planted of all late yellows.
- Maud Dean**—Money making late pink.
- Monrovia**—Undoubtedly the very best early yellow for all purposes.
- Mrs. Jerome Jones**—Glistening white with creamy center, a splendid Japanese incurved sort.
- October Frost** — One of the largest early whites, coming to 6 inches, high built, and good substance.
- Omega**—Very large, light yellow.
- Pacific Supreme**—A magnificent pink, intermediate between the shades of Pacific and Duckham.
- Polly Rose**—Very early, pure white; good for pots or cutting.
- Pres. Roosevelt** — Mottled pink and white, exceedingly beautiful; large round heads; easily handled.



COL. D. APPLETON.



JEANNIE NONIN.



MAUD DEAN.

- Red Wm. Duckham**—Crimson flowered.
- Robert Halliday**—Very fine large early yellow, one of the best of its season.
- Rosiere**—Has made a decided hit as an early pink. Style of V. Morel, of easy culture and fine clear pink color.
- Timothy Eaton** — The old, reliable white; large flowered in full globular shape, and reliable in habit.
- White Cloud**—A rather loose petaled Japanese type; pure white with creamy center.
- White Dean**—White form of the popular Maud Dean.
- Yellow Jerome Jones** (Mrs. Geo. F. Baer)—A good rich yellow counterpart of the white Jerome Jones.
- Yellow Eaton** — A clear yellow counterpart of Timothy Eaton. \$3.50 per 100.
- Unless noted, \$3.00 per 100; \$25.00 per 1000.

THE BABY CHRYSANTHEMUMS

Smallest and prettiest of the Pompons. Individual flowers $\frac{1}{2}$ to $\frac{5}{8}$ of an inch in diameter; in sprays carrying from 6 to 18 flowers, according to strength of the plant. Flowers are very full and double, each petal quilled; color, a bright golden yellow. Many florists are making good money on potted specimens—they are exquisitely pretty—and the cut-sprays are also profitable. \$3.00 per 100.

BABY MARGARET

All the good that has been said of the original yellow "Baby 'Mum" applies equally to this variety, which has just been evolved. Baby Margaret is obviously of more value to the florist, because its perfect little quilled heads are of the cleanest white. \$5.00 per 100.

POMPON 'MUMS

Demand increases for these beautiful small flowered varieties for use in cut sprays, using full heads in house decorations and in pots for market plant sales.

- Alena**—Good sized, beautiful daybreak pink.
- Ashbury**—Lilaceous pink.
- Attila**—Light apricot, tinted rose.
- Bohemia**—Pure yellow.
- Delicatissima**—Lower petals pale pink, center deep wine.
- Gallia**—Light rosy pink.
- Hijos**—Primrose pink.
- Little Bob**—Small red flowers; very free.
- Mary Williamson**—White, changing to pink.
- Nita**—Large flowered, rosy pink.
- Oneita**—Large, well formed flowers, clear yellow.

- Oriole**—Yellow, marked with crimson.
- Princess Louise**—Fine deep pink, large.
- Princess of Wales**—Pure white.
- St. Illiora**—Silvery pink; quilled petals.
- Sir Michael**—Lemon yellow.
- Snowdrops**—Pure white.
- Utan**—Light magenta, edged and tipped white.
- Viola**—Deep violet, very showy and distinct.
- White Flora**—Pure white, large flowered.
- Zenobia**—Bright pure yellow.
- Zoda**—Bright magenta-pink; very dwarf and free flowering.

\$3.00 per 100; \$25.00 per 1000.

OLD FASHIONED HARDY 'MUMS

Absolutely reliable for year to year blooming out-doors.

White, Yellow—\$3.00 per 100.

CANNAS—GENERAL COLLECTION

Prices quoted are for dormant roots with two or more eyes. Pot pants will be furnished in season at \$2.00 additional per 100. All started plants are from 3 and 4-inch pots and well established.

- Allemania**—Orchid-flowered, scarlet with yellow border. 4 to 5 feet.
- Alphonse Bouvier**—Deep crimson. $4\frac{1}{2}$ to 5 feet.
- Austria**—Bright yellow with crimson in the throat. Orchid-flowered. 5 feet.
- Beaute Poitevine**—Bright crimson scarlet. $3\frac{1}{2}$ feet.
- Black Beauty** — Shimmering, black, undulating leaves of great length and rigidity. Very imposing. 5 to 6 feet. \$4.00 per 100.
- Black Prince** — Showy crimson-scarlet, overlaid maroon. 5 feet. \$5.00 per 100.
- Brandywine**—Large trusses; cherry red boldly dappled with crimson; dark bronze foliage. 4 feet. \$4.00 per 100.
- Burbank**—Orchid-flowered; yellow. $4\frac{1}{2}$ feet.
- Buttercup**—One of the very few satisfactory yellows; bright and clean at all times. Grows 3 to $3\frac{1}{2}$ feet with good sized flowers. One row of this planted outside of the dark red flowering sorts makes a striking combination. \$4.00 per 100.
- Chancellor Buelow**—Short, stocky growth, abundantly flowered in full spikes of bloom. Rich crimson-scarlet, shaded maroon. 3 feet. \$4.00 per 100.
- Compte de Sachs**—Bright cherry scarlet, slightly spotted red. 5 feet.
- Crimson Bedder**—Brightest crimson-scarlet. 3 feet.
- Dr. Nansen**—Pure yellow. 3 feet. \$5.00 per 100.

- Duke of Marlborough**—Deep crimson maroon.
- Dwarf Florence Vaughan**—Shorter, more uniform growth; with larger and more richly marked flowers than original. 2½ feet. \$4.00 per 100.
- Florence Vaughan**—Yellow, with bright red spots. 4½ feet.
- Gladiator** — Very showy in beds. Rich yellow speckled red, two center petals solid red. 3 feet.
- Hofgartner Hoppe**—Light bronze foliage; flowers orange-scarlet tipped carmine. 4½ feet.
- Indiana**—A new sort in the Orchid-flowered class; soft orange lightened by flecks of gold, penciled and slightly margined with deep rose. 6 feet. \$10.00 per 100.
- King Humbert**—Nothing to equal it for “blazy” effects in bedding. Easily ahead of all bronze-leaved Cannas, both in foliage and flower. Color, fine orange-scarlet, flaked carmine. Grows 4 to 4½ feet high, and makes fine large clumps. \$4.00 per 100.
- Martha Washington**—Dwarf. 3 feet. A handsome broad flowered rosy pink. \$4.00 per 100.
- Mlle. Berat**—Deep rose-pink. 4 feet.



METEOR.

- Meteor**—Immense heads of large, rounded flowers well displayed above the foliage; brilliant crimson. Flowers keep well and are self-cleaning. 4 feet. 20c each; \$2.00 per dozen.
- Mrs. Geo. A. Strohlein**—Crimson red flowers, handsome dark bronze foliage. 5 feet.
- Mrs. Kate Gray**—One of the finest Orchid-flowered sorts; full heads of soft orange, shaded carmine and with dotted yellow throat. 6 feet.
- New York (Orchid)**—Foliage violet-bronze; flowers large deep scarlet, keeping fresh a remarkably long time. \$1.50 per dozen; \$10.00 per 100.
- Pennsylvania**—Large orchid-flowered; scarlet, overlaid with orange. 5 to 6 feet.
- Queen of Holland**—Large sized, abundant flowers; tawny orange, faintly dotted with rose. Foliage erect and clean, dark purplish bronze. 6 ft. \$8.00 per 100.
- Queen Charlotte**—A wide ragged band of yellow, bordering a carmine-scarlet center. Particularly effective for massing. 3½ feet.
- Richard Wallace**—Tallest of the pure yellows, wide petaled and heavy trussed; rich canary yellow without spot or blemish. Best of its color. 4 to 5 feet. \$4.00 per 100.

- Robert Christie**—Orange scarlet. 4 to 5 feet.
- Rubin**—The flower is bright ruby red, while the foliage is of a beautiful bronze nearly the color of Black Beauty. 3 feet. \$4.00 per 100.
- Souv. de A. Crozy** — Very brilliant and attractive; rich crimson-scarlet bordered golden yellow. 3½ feet. \$3.00 per 100.
- The Express**—Flower truss as large as any Canna while the plant itself rarely exceeds 2 to 2½ feet high. Always a mass of bright vermilion bloom. Useful for massing by itself or bordering beds of taller growing varieties. \$5.00 per 100.
- Venus**—An exquisitely variegated sort of large size, perfect form and ever clean freshness. Would make a fine cut-flower. Color, warm rose-pink; mottled towards center, and edged with creamy white. 4 feet. \$5.00 per 100.
- Wm. Greisinger**—Large, well opened flowers; bright yellow sprinkled with vivid scarlet. Two small petals are nearly solid red, making a showy contrast. 4 feet. \$3.50 per 100.
- Wm. Saunders**—A very superior sort, combining handsome, dark bronze foliage, with mammoth clusters of large flowers which shed readily and appear always fresh. Color bright scarlet with a shiny silver tinge at base of each petal. 4 feet. \$4.00 per 100.
- Wyoming**—A beautiful Orchid-flowered variety with rich, purplish bronze foliage. Flowers are large as King Humbert and of good substance; bright orange, slightly rimmed and flaked with rose. 7 feet. \$10.00 per 100.

Unless noted, \$2.50 per 100; \$20.00 per 1000.

CALADIUM ESCULENTUM

Fine sound bulbs, with good centers.

Per 100

- 1st size, 9 to 11 inches circumference.....\$6.00
 2nd size, 7 to 9 inches circumference..... 3.00
 3rd size, 5 to 7 inches circumference..... 2.00

CINNAMON VINE

Good roots, \$2.50 per 100.

CLERODENDRON BALFOURI

A unique climbing plant bearing bright scarlet flowers with creamy white calyx. \$5.00 per 100.

COBEA SCANDENS

One of the most rapid growing climbing vines and best shade producers. \$4.00 per 100.

COLEUS

All standard bedding varieties, including such sorts as:

- | | |
|--------------------------|---------------------------|
| Beckwith Gem, | Golden Crown, |
| Chameleon, | Her Majesty, |
| Duneira, | Queen of the West, |
| Empress of India, | Verschaffelti. |
| Glory of Autumn, | |

Strong, well established pot plants, \$2.50 per 100; \$20.00 per 1000.

CUPHEA PLATYCENTRA

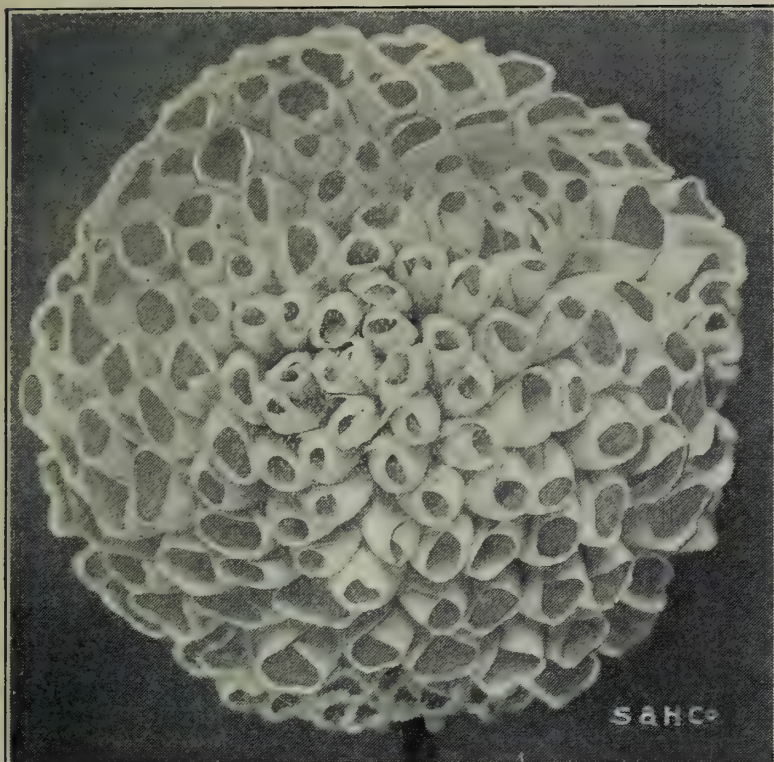
(Cigar Plant.)

\$2.50 per 100.

CYPERUS ALTERNIFOLIUS

(Umbrella Plant.)

2½-inch, \$3.00 per 100.



A. D. LIVONI.

DAHLIAS

Strong field-grown roots.

- A. D. Livoni (Double)**—Pink, quilled petals.
- Arabella (Show)** — Primrose yellow, tipped and shaded old rose and lavender.
- Caleb Powers (Show)**—A new sort offered in started plants only. Large, compact, ball-shaped flowers of white, tinted with salmon-pink. \$10.00 per 100.
- Catherine Duer (Decorative)**—Iridescent geranium-red; a valuable gas-light cut flower.
- Claribel (Decorative)**—Bright purple, early.
- Clifford W. Bruton (Decorative)**—Good yellow.
- Countess of Lonsdale (Cactus)**—Salmon.
- Cuban Giant (Show)**—Flowers 6 to 7 inches in diameter; dark, glowing crimson shaded maroon. A tall, strong grower, with projecting flower stems.
- Eclipse (Show)**—Crimson-scarlet.
- Eldorado (Decorative)**—Copper yellow.
- Flamingo (Cactus)**—Orange red, bluish tips.
- Floradora (Cactus)** — Rich mahogany red. \$8.00 per 100.
- Gigantea (Decorative)** — Giant flowered; creamy white.
- Glory of Baarn (Peony-flowered)**—Beautiful suffusion of rose-pink and white; large 8-inch flowers. A mass of bloom good for cutting, early and late. \$8.00 per 100.
- Grand Duke Alexis (Show)**—Largest white; quilled petals. \$8.00 per 100.
- Henry Patrick (Decorative)**—Perfect shape; pure white.
- Jack Rose (Decorative)**—A magnificent new sort, very free flowering and showy in the field, with long stems and perfect form for cutting; rich crimson-red with maroon shadings at center. \$8.00 per 100.
- John Thorpe (Show)**—Large and full; bright violaceous-pink. \$8.00 per 100.
- Keyne's White (Cactus)**—A fine creamy white.
- Kriemhilde (Cactus)**—Pink, with cream white center.
- Little Prince (Pompone)**—Free, small double flowers, striped crimson, maroon and white.

- Mrs. Roosevelt (Decorative)**—Very broad, flattened flowers; an exquisite suffusion of white and shell pink. \$8.00 per 100.
 - Mrs. Wellsley (Show)**—Fancy flower, white, crimson tipped.
 - Penelope (Show)**—White, flaked lavender.
 - Perle (Decorative)** — Finest pure white in this class. Flowers are large; with long, wide and prettily imbricated petals. \$7.00 per 100.
 - Pink Pearl (Cactus)**—A new pink and white variety of perfect Cactus type; outer petals bright, true pink, center creamy white. \$7.00 per 100.
 - Prince of Yellows (Cactus)**—Rich canary yellow, with broad fringed petals. Blooms rather late, but is a splendid yellow in a long season.
 - Queen of Yellows (Show)**—Deep yellow.
 - Queen Victoria (Show)**—Yellow; softly quilled.
 - Red Hussar (Show)**—Brilliant cardinal red.
 - Snowclad (Pompone)**—Very soft dainty flowers; pure white slightly tinted pink at center.
 - Snowdrift (Show)**—Full, even petaled, nat shape; pure white.
 - Souv. de Gustave Doazan (Decorative)**—Mammoth flowers of brilliant orange red, rounded-up center darker. Very showy. \$8.00 per 100.
 - Standard Bearer (Cactus)**—A gold mine for the florist. Bright scarlet, perfect type. Prodigious amount of bloom; good stems; early and late.
 - Storm King (Show)** — Dwarf and bushy; very free flowering double white. \$7.00 per 100.
 - Strahlen Krone (Cactus)** — Early and free; deep cardinal.
 - Susan (Show)**—A new double sort of great promise. Very free flowering; an attractive mingling of rose-pink and white. \$10.00 per 100.
 - Twentieth Century (Single)**—Very large white with crimson collar.
 - White Dove (Show)**—Very full of fringed, narrow petals. Early and constant bloomer; one of the most profitable whites for cutting.
 - Wild Fire (Single)** — Intense, fiery scarlet; tall growing and bushy, immensely productive.
 - Winsome (Cactus)**—Large pure white.
 - Wm. Agnew (Decorative)**—Dazzling scarlet.
- Unless noted, \$6.00 per 100.

DRACENAS

- Godseffiana**—\$1.00 per dozen.
- Indivisa**—5-inch pots, \$25.00 per 100.
6-inch pots, \$35.00 per 100.
- Terminalis**—4-inch pots, \$25.00 per 100.
5-inch pots, \$40.00 per 100.

FERNS

- Nephrolepis Scholzei (Plumed Scott Fern)** — The smallest saleable plants perfectly express the type, and in every size are models of beauty for table decoration.
2½-inch pots, \$5.00 per 100; \$40.00 per 1000.
5-inch pots, \$5.00 per dozen; \$35.00 per 100.
- Nephrolepis Bostoniensis (Boston Fern)**—Well established plants from 2½-inch pots. \$3.50 per 100; \$30.00 per 1000.
- Nephrolepis Whitmani** — 2½-inch pots, \$5.00 per 100; \$40.00 per 1000.
- Nephrolepis Scotti (Dwarf Boston Fern)**—Develops into shapely plants much more rapidly than any other fern.
Per 100
2½-inch pots, strong,.....\$5.00
4-inch pot plants.....25.00
5-inch pot plants.....50.00

SMALL FERNS FOR DISHES

- Aspidium Tsussimense*—\$3.50 per 100.
Cyrtomium Falcatum—\$3.50 per 100.
Pteris Cretica Albo-Lineata.
Pteris Mayi.
Pteris Serrulata Cristata Nana Variegata.
Pteris Wimsetti.

Unless noted, \$3.00 per 100; \$25.00 per 1000.

FICUS

- Elastica* (India Rubber Tree) — 4-inch pot plants, \$25.00 per 100.
Pandurata (Majestic Rubber Plant) — 8-inch pot plants, 36 to 40 inches high, \$2.00 each; 6-inch, 24 to 30-inch, \$1.00 each.

FUCHSIAS

We offer a good list of Fuchsias. \$3.00 per 100; \$25.00 per 1000.

FUCHSIA LITTLE BEAUTY

\$4.00 per 100.

GENISTA RACEMOSA

4-inch pot plants, \$15.00 per 100.

GERANIUMS

GENERAL COLLECTION OF DOUBLE GERANIUMS

- A. H. Trego*—Semi-double hybrid ivy-leaved; dazzling scarlet, large flowered, a single floret measuring 2½ inches across. A splendid bedder.



BERTHA DE PRESSILY.

- Bertha de Pressily*—Flowers light silvery rose. One of the very few delicately shaded Geraniums that does not burn or fade with storms.
Fiancee—Largest and best double white. Blooms in immense trusses. Plants strong growing, yet very compact. \$4.00 per 100.
Flamingo — One of the showiest, shapeliest and most thrifty double reds on the market. Brighter colored than Nutt, with identical foliage and similar growth. \$5.00 per 100.

Francis Perkins—One of the finest pink bedding Geraniums. Flowers bright pink with distinct white eye, produced in immense umbels.

Jean Oberle (New) — Immense trusses (often 100 florets), hydrangea pink shading to almost pure white at outer edges of petals. Practically sun-proof, and a strong grower. \$5.00 per 100.

La Favorite—Pure white; best white bedder.

Mad. Barney — Undoubtedly the most popular double pink for bedding or pot sales. Its style of growth, size and color of flower and ease of propagation are qualities sufficient to place it at the head of pink Geraniums.

Marvel—Rich bright crimson.

M. G. Merand—An excellent grower and profuse bloomer; color, reddish violet, shading to center of light scarlet.

S. A. Nutt—Rich dark crimson of perfect shape and large size; an excellent bedder.

Vera Vend (Double) — A predominating center of white, stained primrose; continued outward from a pale suffusion to highly colored margin—of orange carmine.

Unless noted, \$3.00 per 100; \$25.00 per 1000.

SINGLE FLOWERED

Julia Marlowe—Very large pure scarlet.

Lady Renals—Rosy scarlet, with white eye.

Paul Desjardins — Broad petaled, violet-crimson flower with upper petals scarlet at base. Quite unlike any other variety. \$6.00 per 100.

Thesee — Of large, open form; white, with an aureole of rose and carmine.

Unless noted, \$4.00 per 100; \$30.00 per 1000.

GENERAL COLLECTION OF BRUANT GERANIUMS

Alphonse Ricard—Excellent bedder or pot plant. Bright orange red.

Beaute Poitevine—Rosy salmon.

Fleuv Blanc (New)—A grand single white; flowers very large and free. \$6.00 per 100.

Heteranthe—Bright scarlet, one of the best.

Jean Viaud—Large semi-double rosy pink flowers with white eye. Blooms with uninterrupted freedom the entire season.

John Doyle—Bright vermilion scarlet, semi-double.

Mad. Landry—Semi-double. Rich salmon, shaded orange.

Marquis de Castelaine—A giant among Geraniums; flowers averaging 2½ inches in diameter. Color, vivid rosy scarlet, shading into pure scarlet at the edge of upper petals.

Mrs. E. G. Hill—Large single flowers; bright salmon, with a light shading at center.

Unless noted, \$3.00 per 100; \$25.00 per 1000.

IVY LEAF GERANIUMS

Alliance—A new hybrid of the Ivy and Zonale races, showing a profusion of semi-double flowers colored an exquisite shade of lilac-white. Upper petals are feathered and blotched bright crimson-rose. \$4.00 per 100.

Caesar Franck — Great trusses, which closely resemble the clusters of Crimson Rambler Rose. Bright crimson, shading into tender rose at base of petals. Exceedingly rich in appearance and one of the most remarkable sorts in this class. \$4.00 per 100.



COL. BADEN-POWELL.

Col. Baden-Powell—The largest flowered, and one of the most serviceable for vase and basket filling and for cutting. The ground color is pearl white, uniquely marked with crimson and maroon. Plant characterized by rapidity of growth and freedom of bloom. \$5.00 per 100.

Jeanne d'Arc—Flowers very large and of the purest white; fine habit; free flowering. \$4.00 per 100.

Souv. de Chas. Turner—Florets 2½ inches, in trusses six inches across. The color is a deep, bright purple approaching scarlet; the upper petals feathered maroon. \$4.00 per 100.

VARIEGATED LEAVED GERANIUMS

	Per 100
Happy Thought	\$5.00
Mad. Salleroi—\$25.00 per 1000.....	3.00
Mrs. Parker	5.00
Mrs. Pollock	5.00
Prince Bismarck	4.00
Wm. Langguth—Double red flower, beautiful green and white foliage.....	6.00

SCENTED GERANIUMS

Rose Scented—\$2.50 per 100.

GLADIOLUS

America—Beautiful, soft flesh pink (much like Enchantress Carnation) faintly tinged with lavender. Spikes develop very evenly and to great length, sometimes with two or three branches. Very popular for cutting and on account of its vigorous, healthy growth, equally valuable for bedding. \$4.00 per 100; \$35.00 per 1000.

Augusta—Lovely pure white, with blue anthers. \$2.50 per 100.

Grenadier (Velvet King)—A bold impressive field flower and a brilliant cut flower sort. Flowers and spikes are large, compact and full, the wrinkled edges of petals giving a general ruffled appearance. Ground color scarlet overlaid with orange.

Lower petals bisected by a narrow white band which runs into a throat of polished mahogany, upper petals silvered, the whole faintly mottled with tawny red. Flowers have good substance and keep well. \$6.00 per 100.

Mrs. Francis King—A fine, strong growing variety with large spikes of showy flowers. Bright pure scarlet. One of the really grand cut flower sorts. \$3.00 per 100; \$25.00 per 1000.

CHILDSII MIXTURE

The large flowers, dazzling colors and monstrous spikes of this popular strain are well known and popular. Our mixture contains many named varieties, and is intended for a trade wanting something better than an ordinary mixture. \$2.50 per 100; \$18.00 per 1000.

GLADIOLUS GANDAVENSIS

These we can offer under separate colors that will prove true to color and are used for large plantings for cut-flower and bedding purposes.

White and Light Shades—Mixed varieties and selected seedlings that will give best results. \$1.75 per 100; \$15.00 per 1000.

Pink — A mixture of fine pink and rose shades. \$1.50 per 100; \$12.00 per 1000.

Striped and Variegated — An inexpensive section with a wide range of shadings in light colors, useful for cut-flowers and massing. \$2.50 per 100; \$20.00 per 1000.

Red—Select mixture of all shades of red and scarlet from which all of the small inferior reds have been discarded. \$1.50 per 100; \$12.00 per 1000.

MIXED GLADIOLI

We have taken pains to get up a mixture containing as many distinct types and shades as possible, and have used named varieties and named colors together with a lot of selected seedlings, all together forming a mixture, for all purposes, that cannot be surpassed.

First size—\$1.20 per 100; \$10.00 per 1000.

Second size—90c per 100; \$7.00 per 1000.

GLOXINIAS

Separate colors as follows: White, Red, Violet, Violet bordered White, and Red bordered White. \$4.00 per 100; \$35.00 per 1000.

GERMAN IVY

Strong 2½-inch pot plants, will be able to supply in quantity throughout the spring. \$2.50 per 100; \$20.00 per 1000.

ENGLISH IVY

	Per 100
2½-inch pots	\$ 4.00
4-inch pots	12.00
5-inch pots	20.00

NEW HELIOTROPE CENTEFLEUR

Dwarf, bushy growth, with fine foliage. The vigorous plants are completely covered with bloom, in the largest sprays ever seen. Florets wide and flat, color deep heliotrope with conspicuous white eye, deliciously fragrant. \$5.00 per 100.

HELIOTROPES

Best market varieties in purple and blue, including Czar, Czarina, Buisson Fleuri, Jersey Beauty, Florence Nightingale, and Prince Charmant. \$3.00 per 100; \$25.00 per 1000.

HIBISCUS SINENSIS

Peachblow—An excellent free-flowering, large flowered sort, blooming when in small pots nicely. Double, clear pink, with small crimson center. \$4.00 per 100.

HYDRANGEA

ARBORESCENS GRANDIFLORA

(Snowball Hydrangea.)

A grand addition to the summer flowering hardy shrubs. Comes into bloom just at a time when there is a scarcity of outside white flowers, along through July and August. Blooms with purest snow-white flowers, shaped much like the Snowball flower but much larger and more attractive. Nothing in hardy shrub line approaches it in freedom of bloom, duration of flower and value. Strong field grown plants:

- 18 to 24 inches high, 3 to 5 shoots, \$1.75 per dozen; \$12.00 per 100.
- 24 to 30 inches high, 3 to 5 shoots, \$2.00 per dozen; \$15.00 per 100.
- 30 to 36 inches high, 3 to 5 shoots, \$2.50 per dozen; \$18.00 per 100.

LANTANAS

Standard varieties in fine condition. \$4.00 per 100; \$30.00 per 1000.

LEMON—American Wonder

An excellent seller and good house plant. Plants from 2½-inch pots, \$5.00 per 100.

Strong plants, 15 to 18 inches high, from 5-inch pots, \$15.00 per 100; 18 to 24 inches high, \$20.00 per 100.

LEMON VERBENA

An old favorite that is always scarce. 60c per dozen; \$4.00 per 100; \$30.00 per 1000.

LILIES

(Japan Grown.)



GOLD BANDED LILY,—AURATUM.

- Auratum**—8 to 9 inches in circumference... \$6.00
- 9 to 11 inches in circumference... 8.50
- Speciosum Album** 7.50

- Speciosum Melpomene** 7.00
- Speciosum Rubrum** 6.00
- Tigrinum** 4.00
- Tigrinum Splendens** 4.00
- Pardalinum** 6.00
- Umbellatum Grandiflorum** 6.00

LILY OF THE VALLEY

Hamburg pips, 3 years old, \$1.50 per 100; \$12.00 per 1000.

LINUM TRYGINUM

Bright yellow flowers, 2½ to 3 inches in diameter. Good for pot plant market, \$5.00 per 100.

MONTBRETIA

Per 100

- Fire King**—Brilliant red; extra fine.....\$4.00
- Pyramidalis**—Salmon and apricot 2.00
- Rosea**—Bright rose color 2.00
- Soleil Couchant**—Pale yellow 2.00
- Talisman**—Dark scarlet 2.00
- Transcendent**—Red and yellow 2.00

MOONFLOWER—Ipomea Grandiflora

Probably the most popular of all tender climbing vines. Grows rapidly, making dense shade and flowers very freely with its large pure white blooms. \$3.00 per 100; \$25.00 per 1000.

MOONFLOWER—Ipomea Maxima

A rampant growing, free-blooming Moonvine with flowers as large again as the common type and just as free flowering. Quite distinct in foliage and altogether a different plant. We have them growing and blooming side by side and find this one much more attractive. \$5.00 per 100.

OTAHEITE ORANGE

Strong plants 15 inches high, from 5-inch pots, \$3.00 per dozen; \$20.00 per 100.

PALMS

KENTIA BALMOREANA

Per 100

- 2½-inch pots \$ 9.00
- Each.
- 5-inch pots, 16 to 20 inches high\$.75
- 6 " 5 to 6 leaves, 24 inches high. 1.00
- 7 " 6 to 7 leaves, 24 to 26 in. high. 1.50
- 7 " 6 to 7 leaves, 26 to 28 in. high. 2.00

KENTIA FORSTERIANA

Per 100 Per 1000

- 2½-inch pots, 8 to 10 inches high...\$ 9.00 \$80.00
- 3 " 12 to 15 " ... 15.00
- Each.
- 7-inch pots, 40 to 44 inches high, 5 to 6 leaves.\$2.50
- 8-inch pots, 44 to 48 inches high, 5 to 6 leaves, 3.50

MADE UP KENTIA FORSTERIANA

Strong bushy plants, three plants to a tub.

Each.

- 7-inch tubs, 40 to 44 inches high.....\$4.00
- 8 " 44 to 48 " 5.00
- 10 " 44 to 48 " (heavy)..... 6.00
- 10 " 48 to 52 " (heavy)..... 7.00

COCOS WEDDELIANA

- 2½-inch pots, \$10.00 per 100.
- 3-inch pots, \$15.00 per 100.

LATANIA BORBONICA

3-inch pots, 10 to 12 inches high, \$10.00 per 100.
 4-inch pots, 12 inches high, \$2.50 per dozen; \$20.00 per 100.
 6-inch pots, 18 inches high, 5 to 6 leaves, 75c each; \$8.00 per dozen.
 8-inch pots, 24 inches high, 6 to 7 leaves, \$1.50 each.
 10-inch pots, 30 to 36 inches high, 7 to 8 leaves, \$2.50 each.

PANDANUS

Veitchi—5-inch pots at 75c each.
 Utilis—3-inch pots, \$10.00 per 100.
 4-inch pots, \$20.00 per 100.

PARIS DAISIES

Highly appreciated by florists for cut-flower work and pot plant decorating.

Etoile d'Or—A splendid new yellow sort. \$4.00 per 100.

Queen Alexandra—Flowers pure white, 2½ to 3 inches wide, coming single, semi-double and fully double on same plant. \$4.00 per 100.

Coronation—Pure white daisies, extra large, completely covering plant. \$4.00 per 100.

PELARGONIUMS

Countess—Immense size flowers of a clear, attractive shade of salmon; large, pure white center, feathered maroon in upper petals.

Dorothy—Beautifully fringed. Flowers large; rosy salmon with dark maroon blotch on upper petals, richly shaded plum color around the throat.

Madame Vibert — A splendid flower with black maroon blotches bordered fiery red, the entire flower edged with rose.

Mrs. Robert Sandiford—The flowers are three inches across, of the purest snow-white, and perfectly double and very free in bloom.

Sandiford's Wonder—A splendid semi-double white flower of great beauty; very pure in color, occasionally showing a small rich maroon spot in upper petals.

3-inch pot plants ready in March, \$1.50 per dozen; \$10.00 per 100.

PELARGONIUM—Mrs. Loyal

(The Genuine "Pansy Geranium.")

Its colors range from a large crimsoned chocolate center through pink to white at the edges. Growth characterized by compactness and sturdiness. 2½-inch pot plants, \$4.00 per 100; 3-inch pot plants, \$8.00 per 100.

PENTAS LANCEOLATA

A valuable pot plant. 3-inch pots, \$10.00 per 100.

PRIMULA KEWENSIS

2½-inch, \$3.00 per 100. 3-inch, \$5.00 per 100.

PRIMULA FORBESI

(Baby Primrose.)

Remarkably good seller. First grade stock from 2½-inch pots. \$3.00 per 100.

RHODODENDRONS

Forced in great numbers for Easter plant sales.

Strong bushy plants, with clean, bright foliage; well set with flower buds; good assortment of colors in named varieties.

Grafted—18 inches high, 8 to 12 buds.....\$75.00
 24 inches high, 12 to 14 buds.....100.00

Per 100
 Seedlings, very full of buds, 18 inches.....\$60.00
 very full of buds, 24 inches..... 75.00



RICHARDIA ALBA MACULATA

Spotted Calla—Dry bulbs. \$4.00 per 100.

SPIREA CLUMPS



Astilboides Florabunda—\$5.00 per 100; \$45.00 per 1000.

Blondine—An improved pure white, of dwarf compact habit. \$6.00 per 100.

Gladstone—\$10.00 per 100; \$90.00 per 1000.

- Japonica**—Strong forcing clumps. \$4.00 per 100.
Superba — A choice new variety of exceptionally good habits and form, with a blooming capacity superior to older sorts. \$6.00 per 100.

SALVIA

- A. Ragneau**—One of the best dwarf. \$3.00 per 100; \$25.00 per 1000.
Mrs. Chas. N. Page—Very dwarf early bloomer. \$3.00 per 100.
Splendens—Standard bedder. \$3.00 per 100; \$25.00 per 1000.
Zurich—Very brilliant, free blooming dwarf. \$3.00 per 100; \$25.00 per 1000.

SELAGINELLA EMILIANA

\$4.00 per 100.

SMILAX

2-inch, \$3.00 per 100.

SOLANUM JASMINOIDES

\$3.00 per 100.

STROBILANTHUS DYERIANUS

\$4.00 per 100.

SWAINSONIA

- Galegaefolia Alba** — The dainty white sprays are very valuable for winter floral work. \$5.00 per 100.

TRADESCANTIA—Wandering Jew

- Striata**—\$2.50 per 100.
Silver Queen—\$5.00 per 100.

TUBEROSES

- Dwarf Pearl**—\$1.00 per 100; \$8.50 per 1000.
Variegated Leaved or Orange Flowered.....\$1.50

VINCA MAJOR VARIEGATA

4-inch pots, \$8.00 per 100.

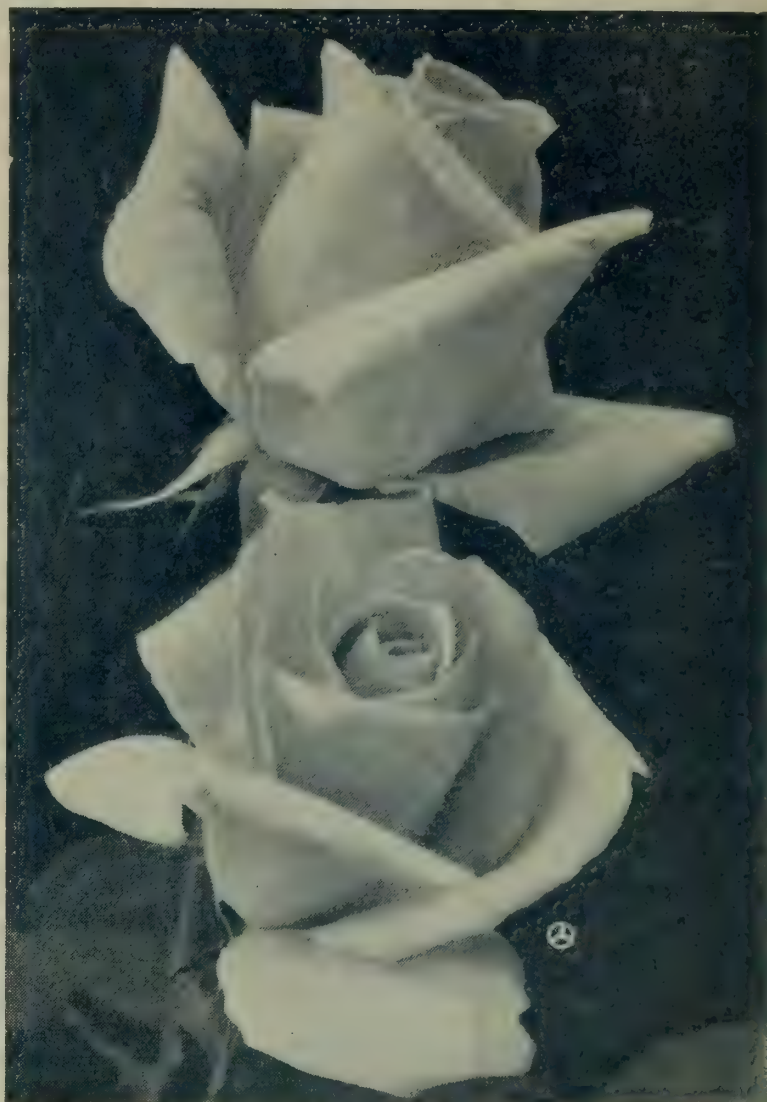
VIOLETS

- California, Princess of Wales, Swanley White**—\$3.00 per 100.
Hardy English or Russian—\$5.00 per 100; \$45.00 per 1000.

ROSES

From 2½-inch pots.

- Baby Dorothy (Hybrid Polyantha)** — Pink. \$4.00 per 100.
Baby Rambler (Hybrid Polyantha)—Crimson.
Baby Rambler White (Hybrid Polyantha.)
Blumenschmidt—Yellow and rose.
Bridesmaid—Pink.
Burbank—Cherry-crimson.
Champion—Pink.
Climbing Baby Rambler—A strong climbing form of the true Baby Rambler; very showy, free and continuous; foliage clean and exempt from mildew. \$10.00 per 100.
Climbing Clotilde Soupert—Pink.
Climbing Marie Guillot—Tinted white.
Climbing Gruss an Teplitz—Crimson. \$5.00 per 100.
Etoile de Lyon—Yellow.
Freiherr von Marschall—Deep carmine; buds long, open flowers very full, free and richly colored. \$6.00 per 100.



KILLARNEY.

- Friedrichsruhe**—Deep blood-red; flowers large and free. \$10.00 per 100.
F. R. Patzer—A beautiful combination of colors showing orange-pink in the opened flowers. \$6.00 per 100.
Gruss an Teplitz—Crimson.
Hermosa—Blush white.
Kaiserin Augusta Victoria—Creamy white. \$4.00 per 100.
Killarney—Pink. \$4.00 per 100.
Lady Mary Corry—Yellow.
Lamarque—Canary yellow.
Mad. Abel Chatenay — Rosy carmine, shaded salmon.
Mad. Francesca Kruger—Copper yellow.
Mad. Cecil Brunner—Yellow and salmon-rose.
Marechal Neil—Yellow climber.
Mamam Cochet—Pink.
Melody—Apricot yellow; a splendid cutting sort. \$8.00 per 100.
Mistress Taft (Polyantha)—Rosy crimson. \$6.00 per 100.
Mme. Cutbush (Polyantha)—Flesh pink and rose.
Mme. Jules Grolez—Soft rose.
Mme. Segond-Weber—Rosy salmon. \$6.00 per 100.
Molly Sharman-Crawford—A delightfully scented white. \$6.00 per 100.
Mrs. A. R. Waddell—Apricot yellow. \$6.00 per 100.
Mrs. B. R. Cant—Salmon-rose.
Orleans (Polyantha)—Geranium red, with white center. \$6.00 per 100.
Phyllis (Polyantha)—Carmine-pink; very free.
Pillar of Gold—Coppery yellow climbing rose.

The Bride—White.
 Veilchenblau—(The Blue Rambler.)
 Wellsley—Pink.
 White Killarney—\$4.00 per 100.
 White Mamam Cochet.
 White M. Neil.
 Wm. Allen Richardson—Orange yellow and rose.
 Wm. R. Smith—Creamy white, shaded pink.
 Unless noted, \$3.50 per 100; \$27.50 per 1000.

1 YEAR FIELD GROWN ROSES

Potted in 4-inch pots, now semi-dormant.

Baby Dorothy,	Mistress Taft (Poly-
Baby Rambler,	antha) \$15.00 per 100.
Clotilde Soupert,	Mme. Cutbush,
K. A. Victoria,	Orleans (Polyantha)
Mad. J. Grolez,	\$15.00 per 100.
Mamam Cochet,	Richmond.

Unless noted, \$10.00 per 100.

2 YEAR FIELD GROWN ROSES

Strong home-grown, 2-year plants.

FIELD GROWN HYBRID TEA AND TEA ROSES

Gen. MacArthur,	Killarney, \$17.50 per
Gruss an Teplitz,	100.
J. B. Clark,	Mamam Cochet,
Kaiserin A. Victoria,	Mme. Caroline Testout.
La France,	White Mamam Cochet.

\$15.00 per 100, unless noted.

HYBRID PERPETUALS

Alfred Colomb,	Gen. Jacqueminot,
Anna de Diesbach,	Magna Charta,
Clio,	Mad. Plantier,
Duke of Edinburg,	M. P. Wilder,
Eugene Furst,	Mrs. J. H. Laing,
Francois Levet,	Paul Neyron,
Frau Karl Druschki,	Ulrich Brunner,
\$15.00 per 100.	Vick's Caprice.

Unless noted, \$12.00 per 100; \$100.00 per 1000.

HARDY CLIMBING ROSES

Anna Maria,	Rubin,
Crimson Rambler,	Tausendschon,
\$12.00 per 100.	\$15.00 per 100.
Dawson,	Tenn. Belle,
Flower of Fairfield,	Trier, \$12.00 per 100.
\$15.00 per 100.	Veilchenblau,
Hiawatha,	\$12.00 per 100.
Leuchtstern,	White Rambler,
Newport Fairy,	Yellow Rambler.
Pink Rambler,	

Unless noted, \$9.00 per 100.

RUGOSA ROSES

Rugosa Alba,	Blanc Dbl. de Coubert,
Agnes E. Carmen,	\$15.00 per 100.
Belle Poitevine,	New Century,
Conrad F. Meyer,	Rugosa Rubra.

Unless noted, \$12.00 per 100.

ENGLISH SWEET BRIAR

\$10.00 per 100.

HYBRID SWEET BRIARS

Assorted named varieties.

\$15.00 per 100.

TREE ROSES

Hardy varieties of Hybrid Perpetuals, Hybrid Teas and Baby Rambler, budded into strong straight stems 4 to 5 feet high. One of the best selling articles for city planting. \$40.00 per 100.

HARDY PERENNIAL PLANTS

Our list includes all of the Hardy Herbaceous plants that are of value to the commercial florist.

Achillea, The Pearl—Useful for cutting. \$5.00 per 100.

Agrostemma (Rose Champion)—Coronaria Alba and Rosea. \$6.00 per 100.

Anchusa Italica, Dropmore Variety —A vastly improved form of the Italian Alkanet, with 3 to 4 feet of coarse, leafy growth and a continuous show of deep blue clusters all summer. \$7.00 per 100.

Anemone Japonica—Field grown. \$5.00 per 100.

—Alba. —Rose d'Autumn.

—Rubra. —Rosea Superba.

—Queen Charlotte. —Whirlwind.

—Turban.

Above Anemones, 2-inch pot plants, in May, \$3.00 per 100; \$25.00 per 1000.

Anthemis Tinctoria—Clear yellow, daisy-like flower. \$5.00 per 100.

Armeria Maritima Splendens (Cushion Pink)—\$6.00 per 100.

Asclepias Tuberosa (Butterfly-Flower) — \$5.00 per 100.

Asters (Michaelmas Daisies)—Laevis, Mme. Soyneuse, Novae Angliae, Novae Angliae Rosea, Tartarica, Thos. S. Ware. \$5.00 per 100.

Boltonia Asteroides—\$4.00 per 100.

Campanula Carpatica (Blue)—\$5.00 per 100.

Campanula Carpatica Alba—\$5.00 per 100.

Campanula Media—Rose, Blue, White. \$5.00 per 100.

Cassia Marilandica (American Senna)—Blooms in large panicles of bright yellow, July to August. 3 to 5 feet. \$7.00 per 100.

Clematis Davidiana — Grows 2 to 3 feet. Flowers tubular, of a delicate lavender blue and very sweet scented. \$8.00 per 100.

Coreopsis Lanceolata Grandiflora (Strong) — \$5.00 per 100. Lighter plants for potting, \$3.00 per 100.

Shasta Daisy—We have a grand strain of these; a mixture of the three named varieties; Westralia, California and Alaska; give great variety of forms and monstrous sized flowers. \$5.00 per 100.

Delphinium (Larkspur) — Formosum, Coelestinum, and mixed Hybrids. \$5.00 per 100.

Delphinium — Chinensis, and Chinensis Alba. \$4.00 per 100.

Dicentra Spectabilis (Bleeding Heart) — \$7.00 per 100.

Dictamnus Fraxinella—Rubra. \$6.00 per 100.



PEONY FESTIVA MAXIMA AT PAINESVILLE NURSERIES.

- Digitalis** (Fox Glove) — *Gloxiniaeflora* and *Gloxinaeflora Alba*. \$6.00 per 100.
- Eupatorium Ageratoides** (White Snakeroot)—\$5.00 per 100.
- Funkia Subcordata Grandiflora** (Alba) — Strong roots. \$5.00 per 100.
- Funkia Undulata Variegata**—\$5.00 per 100.
- Gaillardia Grandiflora**—\$5.00 per 100.
- Gypsophila Paniculata** (Baby's Breath)—\$6.00 per 100.
- Hardy Grasses** — *Eulalia Univittata*, *Eulalia Japonica Variegata* and *Erianthus Ravennae*. \$5.00 per 100.
- Hardy Grass** — *Phalaris Arundinacea Variegata* (Ribbon Grass)—\$3.00 per 100.
- Hardy Grass**—*Arundo Donax* and *Arundo Donax Variegata*. \$10.00 per 100.
- Helianthus** — *Maximilliana*, *Mollis Grandiflorus*, *Multiflorus Plenus* and *Rigidus*—Field grown. \$5.00 per 100.
- Hemerocallis**—*Dumortieri* and *Kwanso fl. pl.*—\$5.00 per 100.
- Heliopsis Pitcheriana**—\$5.00 per 100.
- Hesperis Matronalis** (Rocket)—Stout, bushy plants 3 to 4 feet high, with showy terminal spikes of pink flowers during June and July. \$7.00 per 100.
- Hardy Hibiscus** — *Crimson Eye*. \$3.00 per 100. *Moscheutos*. \$5.00 per 100.
- Hollyhocks** (Strong field grown)—*Crimson*, *White*, *Yellow* and *Pink*. \$5.00 per 100.
- Hollyhock Allegheny** (Fringed) — Mixed colors. \$5.00 per 100.
- Hyacinthus Candicans** — Strong bulbs. \$2.00 per 100.
- Hypericum Moserianum** — Waxy yellow rose-like flower. \$7.00 per 100.
- Iris Germanica**—Distinct varieties. \$3.00 per 100.
- Iris Kaempferi**—Named varieties as follows, numbered and arranged according to their relative blooming season; the entire collection providing a long succession:
- Gekka-no-nami** (Waves under Moonlight) (1)—Glistening white with creamy white stigmas.
- Momiji-no-taki** (Maple Waterfall) (2)—A choice, double variegated variety; bright crimson purple, beautifully feathered in white. Petaloid-stigmas white, purple crested.
- Purple and Gold** (3)—Enormous double flowers often ten inches across, early and free blooming; one of the very best varieties. Color, rich violet-purple with white petaloids tipped violet.
- Gold Bound** (4)—A fine double pure white, with gold banded center.
- Hana-no-Nishiki** (Flower Embroidery) (5)—Six to eight petals in conical arrangement, with well developed petaloids, make this sort the most fully double in the collection. Color a distinct claret-pink, with fine white veins.
- Eclipse** (6)—Velvety claret-red shaded violet, with prominent throat markings in pure gold. Flowers extremely large; with six wide petals, and petaloid-stigmas so fully developed as to make an extra row at the center. Special. \$7.50 per 100.
- Mahogany** (7)—Large double flowers, the latest to bloom. Purpled mahogany-red; the erect petaloids prettily crested. \$7.50 per 100.
- Unless noted, \$6.00 per 100.
- Iris, Sibirica**—Dwarf, early flowering; bright blue. \$3.00 per 100.
- Lathyrus Latifolius** (Perennial Pea)—*White*, *Pink* and *Red*. \$8.00 per 100.
- Liatris Spicata** (Blazing Star)—2 to 3 feet spikes of gay purple flowers. \$5.00 per 100.
- Linum Perenne** (Perennial Flax)—*Blue* and *White*. \$6.00 per 100.
- Lobelia Cardinalis** (Cardinal Flower)—\$5.00 per 100.
- Lychnis Chalcedonica**—\$4.00 per 100.
- Lychnis Viscaria fl. pl.**—\$5.00 per 100.
- Lythrum Roseum Superbum** (Rose Loose Strife)—\$6.00 per 100.
- Papaver** (Poppy) — *Bracteatum* and *Orientalis*. \$8.00 per 100.
- Papaver Nudicaule** (Iceland Poppy)—*White*, *Yellow*, *Orange*. \$6.00 per 100.
- Pardanthus Chinensis** (Blackberry Lily)—\$5.00 per 100.
- Pentstemon** (Beard Tongue), *Barbatus Torreyi*, and *Digitali-Flori*—\$4.00 per 100.
- Peonies in Variety**—\$10.00 per 100 and up.
- Peony Officinalis Rubra fl. pl.** (Old Fashioned Early Red)—\$8.00 per 100.



- Hardy Phlox** — Field-grown roots, in assortment, \$4.00 per 100; \$35.00 per 1000.
- Phlox Subulata** (Moss Pink)—Dwarf; rose colored. \$4.00 per 100.
- Physostegia** (False Dragon Head)—*Speciosa Alba* and *Virginica*. \$4.00 per 100.

- Platycodon Grandiflorum** (Chinese Bell-Flower)—\$3.00 per 100.
- Platycodon Mariesii**—Dwarf, deep blue. \$3.00 per 100.
- Polemonium Caeruleum** (Jacob's Ladder)—\$6.00 per 100.
- Rudbeckia**—"Golden Glow"—Strong clumps, \$8.00 per 100. Strong divisions, \$3.00 per 100.
- Rudbeckia Purpurea**—Outside petals reddish purple with high center of brown. \$6.00 per 100.
- Rudbeckia Newmanii**—Single yellow, purple cone. \$5.00 per 100.
- Salvia Azurea Grandiflora**—Grows 2 to 3 feet. Flowers sky-blue, completely enveloping the plant. \$6.00 per 100.
- Sedum Spectabilis** (Stone Crop)—\$8.00 per 100.
- Stachys Lanata** (Woundwort)—Silvery felt foliage, broad and compact; a 12-inch edging plant. Flowers purple. \$5.00 per 100.
- Statice Latifolia** (Sea Lavender)—\$6.00 per 100.
- Stokesia Cyanea** (Corn Flower Aster)—Bright lavender blue. One of our best hardy border plants. Strong plants from field. \$5.00 per 100.
- Stokesia Cyanea Alba**—Pure white. \$8.00 per 100.
- Tradescantia Virginica**—Dark blue summer flowers. \$5.00 per 100.
- Alba**—White flowers. \$5.00 per 100.
- Tritoma Pfitzeri** (Ever-blooming Tritoma)—\$7.00 per 100.
- Veronica** (Speedwell)—Flowers are borne in long compact spikes. Abundant during July and August.
- Incana**—Silvery foliage; flowers amethyst blue. One foot. \$6.00 per 100.
- Maritima**—Long blue spikes. Two feet. \$6.00 per 100.
- Spicata**—Bright blue. 1½ feet. \$6.00 per 100.
- Virginica**—Tall, pure white. \$8.00 per 100.
- Yucca Filamentosa**—Strong 3-year plants \$8.00 per 100. One-year transplanted \$4.00 per 100.

HARDY SHRUBS AND VINES

(For complete list of Shrubbery, see Catalogue No. 4.)

- Altheas**—In variety 3 to 4 feet, \$12.00 per 100.
- Ampelopsis Veitchii**—Strong field-grown plants, 2 to 3 feet tops, \$10.00 per 100; 18 to 24-inch tops \$7.00 per 100.
- Azalea Mollis Seedlings**—12 to 15 inches, \$25.00 per 100; 15 to 18 inches, \$35.00 per 100.
- Azalea Ghent**—Named varieties. 18 inches high, \$50.00 per 100.
- Barberry Thunbergii**—18 to 24 inches, \$10.00 per 100; 24 to 30 inches, \$14.00 per 100.
- Barberry Purpurea**—18 to 24 inches, \$6.00 per 100; 2 to 3 feet, \$8.00 per 100.
- Barberry Vulgaris**—18 to 24 inches, \$6.00 per 100; 2 to 3 feet, \$8.00 per 100.
- Bignonia Radicans**—\$10.00 per 100.
- Calycanthus Floridus**—2 to 3 feet. \$12.00 per 100.
- Cornus Siberica**—3 to 4 feet. \$12.00 per 100.
- Clematis**—Large flowered in variety, 2-year:
- Henryii, Jackmanii, Mad. Ed. Andre, Ramona,** \$20.00 per 100.
- Clematis Paniculata**—Field-grown plants. One-year, \$4.00 per 100; 2-year, \$6.00 per 100; 3-year, \$8.00 per 100.

- Clematis Coccinea**—Two-year. \$12.00 per 100.
- Dutchman's Pipe**—\$25.00 per 100.
- Deutzias**—In variety, 3 to 4 feet. \$10.00 per 100.
- Euonymus Radicans**—Two-year. \$8.00 per 100.
- Exochorda Grandiflora**—3 to 4 feet. \$15.00 per 100.
- Forsythias**—In variety, 3 feet. \$12.00 per 100.
- Fringe**—Purple. 3 to 4 feet. \$12.00 per 100.
- Honeysuckle, Climbing**—Halleana, Chinese Twining and Aurea Reticulata. \$10.00 per 100.
- Honeysuckle, Climbing**—Monthly Fragrant and Scarlet Trumpet. \$12.00 per 100.
- Hydrangea Paniculata Grandiflora**—18 to 24 inches, \$10.00 per 100; 2 to 3 feet, \$12.00 per 100; 3 feet, strong, \$14.00 per 100.
- Hydrangea, Tree Shaped**—Fine bushy heads on 3 to 4 feet bodies. \$20.00 per 100; 4 to 5 feet, \$25.00 per 100.
- Kalmia Latifolia** (Mountain Laurel or Calico Bush)—18 inches high, 12 inches through, with ball of earth, 50c each.
- Kerria Japonica, fl. pl.**—3 to 4 feet. \$15.00 per 100.
- Kerria Japonica Variegata**—15 to 18 inches. \$12.00 per 100.
- Kudzu Vine**—Strong one-year roots. \$15.00 per 100.
- Lilacs**—White and Purple; 2 to 3 feet. \$12.00 per 100; 3 to 4 feet, \$15.00 per 100.
- Matrimony Vine**—\$8.00 per 100.
- Privet California**—15 to 18 inches, \$2.00 per 100; 18 to 24 inches, \$2.50 per 100; 24 to 30 inches, \$3.50 per 100.
- Privet Ibota**—18 to 24 inches, \$4.00 per 100; 24 to 30 inches, \$6.00 per 100.
- Privet Vulgaris** (English Privet)—2 to 3 feet. \$5.00 per 100.
- Snowberry White**—2 to 3 feet. \$10.00 per 100; 3 to 4 feet, \$12.00 per 100.
- Snowberry Red**—2 to 3 feet. \$10.00 per 100.
- Japan Snowball (Viburnum Plicatum)**—2 to 3 feet. \$15.00 per 100; 3 to 4 feet, \$18.00 per 100.
- Snowballs (Viburnum Sterilis)**—3 to 4 feet, \$15.00 per 100.
- Viburnum Opulus** (High Bush Cranberry)—2 to 3 feet, \$12.00 per 100; 3 to 4 feet, \$15.00 per 100.
- Spirea Van Houtte**—2 to 3 feet. \$9.00 per 100. 3 to 4 feet, \$12.00 per 100.
- Spireas**—In variety, 2 to 3 feet. \$12.00 per 100.
- Weigelas**—In variety, 2 to 3 feet. \$12.00 per 100.

ONE YEAR HARDY SHRUBS AND VINES FOR MAILING OR TRANSPLANTING

- Ampelopsis Quinquefolia.**
- Berberis Thunbergii.**
- Calycanthus.**
- Clematis Paniculata**—2½-inch pots, \$2.50 per 100; \$18.00 per 1,000.
- Cornus Siberica.**
- Deutzias, in variety.**
- Honeysuckle, Climbing**—Aurea Reticulata, Halleana and Chinese Twining.
- Honeysuckles—Upright**—Belle Albida, Morrowi and Tartarica.
- Magnolia Acuminata.**
- Tamarix, in variety.**
- Unless noted, \$3.00 per 100; \$25.00 per 1000.

A Selected List of Tested Vegetable Seeds

No charge for Packing or Cartage. If sent by mail add postage at rate of 8c per lb.,
15c per quart for Beans, Peas, Etc., 10c per qt. for Sweet Corn.

ASPARAGUS—			oz.	¼ lb.	lb.	CAULIFLOWER—			¼ oz.	oz.	¼ lb.
Columbian Mammoth White.	\$0.05	\$0.15	\$0.40	Early Snowball50	1.60	5.75	Extra Early Dwarf Erfurt..	.50	1.50
Conover's Colossal05	.15	.40	Early Favorite20	.50	1.50				
Palmetto05	.15	.40								
BEANS—Dwarf or Bush, Wax Podded—			qt.	pk.	bu.	CARROT—					
Davis Wax20	1.50	5.25	Early Scarlet Horn	} Very short crop. Write for Prices.						
Golden Wax25	1.50	5.50	Danver's Half Long.....							
Yosemite Mammoth Wax...	.30	2.25	Ox Heart							
Wardwell's Dwarf Kidney..	.25	1.35	5.50	Improved Long Orange...							
Saddleback Wax25	1.35	5.50	CELERY—			oz.	¼ lb.	lb.		
Hodson Wax25	1.50	5.50	White Plume20	.60	2.00				
Michigan White Wax.....	.25	1.60	6.00	Golden Self-Blanching							
Challenge Black Wax.....	.25	1.50	5.50	(French)60	2.40	8.50				
Green Podded Varieties—						Giant Pascal15	.40	1.35		
Improved Red Valentine ..	.20	1.25	4.50	Columbia40	1.50				
Stringless Green Pod.....	.25	1.50	5.75	Winter Reliance40	1.35				
White Marrow20	1.50	4.25	Celeriac (Turnip rooted)...	.15	.40	1.45				
Extra Early Refugee.....	.20	1.35	4.50	CORN, Sweet—			qt.	pk.	bu.		
Black Valentine25	1.50	5.00	Nectar25	1.50				
Bush Lima—						Metropolitan20	1.25	3.00		
Henderson25	1.60	6.00	Egyptian20	1.25	3.50				
Burpees25	1.75	6.50	Mammoth White Cory....	.20	1.25	3.50				
Burpees Improved35	2.50	Black Mexican20	1.25	3.50				
Pole or Running—						Early Premo20	1.15	3.00		
Large White Lima25	1.50	5.50	Extra Early Adams15	.85	2.50				
King of the Garden Lima..	.25	1.60	6.00	Early Evergreen20	1.15	3.00				
Old Homestead25	1.60	5.75	White Evergreen20	1.15	3.00				
Lazy Wife25	1.75	Stowell's Evergreen20	1.15	3.00				
BEETS, Table Sorts—			oz.	¼ lb.	lb.	Country Gentleman20	1.25	3.50		
Eclipse25	.85	Field Varieties—							
Bastian's Early Blood.....30	1.00	Early Mastodon Dent40	1.50				
Edmand's Early25	.85	Pride of the North.....40	1.50				
Half Long Blood25	.85	Leaming40	1.50				
Detroit Dark Red.....35	1.15	White Cap Yellow Dent40	1.50				
Crosby's Egyptian30	1.00	Cuban Giant Ensilage40	1.50				
Swiss Chard Lucullus25	1.00	New Mortgage Lifter40	1.50				
Crimson Globe35	1.15	POP CORN—							
Early Model35	1.15	Queen's Golden15	1.00				
BEETS, Sugar and Mangels—						Mapledale Prolific15	1.00		
Klein Wanzleben28	White Rice15	1.00				
Golden Tankard30	Corn Salad or Fetticus			oz.	¼ lb	lb.		
Mammoth Long Red30	..	.15	.45					
Yellow Globe30	CUCUMBER—							
CABBAGE—						Arlington White Spine10	.25	.65		
All-Head Early20	.60	2.00	Improved Chicago Pickling.	.10	.25	.65				
Early Jersey Wakefield (best American)	.20	.60	2.00	Davis Perfect10	.25	.85				
Large Jersey Wakefield or Charleston	.20	.60	2.00	Klondike10	.25	.65				
Sure Head15	.50	1.60	Everbearing10	.25	.65				
Danish Ball Head.....	.25	.85	3.00	Cumberland10	.25	.70				
Houser20	.75	2.50	Improved Long Green10	.25	.85				
Premium Flat Dutch.....	.15	.45	1.50	Cool and Crisp10	.25	.70				
All Seasons15	.45	1.60	Early Cluster10	.25	.65				
Mammoth Rock Red.....	.20	.60	2.00	Emerald10	.25	.65				
Winningstadt15	.40	1.35	DANDELION30		
American Drumhead Savoy.	.15	.50	1.75	EGG PLANT—							
						Improved Large Purple....	.30	1.00		
						Black Beauty30	1.25		
						ENDIVE—					
						Large Green Curled10	.25		
						White Curled10	.25		

KALE, or BORECOLE—	oz.	¼ lb.	lb.
Dwarf Green Curled10	.15	.50
Siberian10	.15	.40

KOHL RABI—	oz.	¼ lb.	lb.
Early White Vienna15	.40	1.50

LEEK—	oz.	¼ lb.	lb.
American Flag10	.35	1.25

LETTUCE—	oz.	¼ lb.	lb.
May King10	.20	.75
Black Seeded Simpson10	.20	.65
Grand Rapids Forcing.....	.10	.20	.65
Denver Market10	.20	.60
Salamander10	.20	.65
New York10	.25	.70
Improved Hanson10	.20	.60
Early Prize Head10	.20	.60
Big Boston, Extra Select...	.15	.35	1.25
Iceberg10	.20	.65
Big Boston10	.25	.75

MELON, MUSK—	oz.	¼ lb.	lb.
Jenny Lind10	.25	.75
Early Hackensack10	.25	.75
Paul Rose10	.25	.75
Rocky Ford10	.20	.60
Osage (Select strain)15	.35	1.00
Defender10	.25	.75
Emerald Gem15	.25	.85
Burrell Gem10	.25	.75
Hoodoo15	.25	.85

MELON, WATER—	oz.	¼ lb.	lb.
Dixie05	.15	.40
Fordhook Early10	.20	.55
Cole's Early05	.15	.50
Sweet Heart05	.15	.45
Halbert Honey10	.20	.55
Florida Favorite05	.15	.45
Kleckley's Sweet10	.20	.60
McIver's Wonderful Sugar.	.05	.15	.45
Citron05	.15	.50
Augusta Rattlesnake10	.20	.60
Ice Cream05	.15	.40

MUSHROOM, SPAWN—
 Lambert's Pure Culture, per brick 15c; 5 bricks for 70c; 25 bricks or more at 12c per brick.

MUSTARD—	oz.	¼ lb.	lb.
Southern Giant Curled10	.15	.35
White05	.10	.15
Fordhook Fancy10	.15	.40

OKRA—	oz.	¼ lb.	lb.
White Velvet05	.10	.30
Perkins Mammoth05	.10	.30

ONION—	oz.	¼ lb.	lb.
Extra Selected Yellow Globe			
Danvers Homegrown25	.75	2.00
Large Red Wethersfield15	.50	1.60
Southport Red Globe15	.50	1.35
White Silverskin20	.75	2.25
Mammoth Silver King15	.40	1.35
Southport White Globe20	.75	2.40
Prizetaker15	.50	1.50
Southport Yellow Globe20	.50	1.75
Yellow Globe Danvers20	.50	1.75

PARSNIP—	oz.	¼ lb.	lb.
Hollow Crown10	.25	.75

PARSLEY—	oz.	¼ lb.	lb.
Champion Moss Curled10	.35	.85
Hamburg (Turnip rooted)...	.10	.35	1.25
Plain10	.25	.75

PEAS—Shortest crop in years. Ask for Prices.

PEPPER—	oz.	¼ lb.	lb.
Early Neapolitan30	.75	2.00
Ruby King15	.60	1.60
Giant Crimson40	1.25
Red Cayenne15	.50
Sweet Mountain15	.50
Ruby Giant40	1.25
Chinese Giant40	1.25

PUMPKIN—	oz.	¼ lb.	lb.
Sugar05	.15	.40
Large Yellow Field05	.10	.25
Quaker Pie05	.15	.50
Striped Cushaw05	.15	.45

RADISH—	oz.	¼ lb.	lb.
Early Scarlet Globe05	.15	.40
Early Long Scarlet, short top	.05	.12	.35
Early Round Scarlet05	.12	.35
Early Round White05	.12	.35
Early Round Scarlet, Tipped			
White05	.15	.40
Chartier05	.12	.35
French Breakfast05	.15	.40
Crimson Giant05	.15	.45
White Strasburg05	.15	.40
Cincinnati Market05	.15	.40
Icele05	.15	.40
Early Scarlet Olive.....	.05	.15	.40

Winter Varieties—	oz.	¼ lb.	lb.
Long Black Spanish05	.15	.35
Rose China Winter.....	.05	.15	.40
California Mammoth White.	.05	.15	.45

RHUBARB—	oz.	¼ lb.	lb.
Linnaeus10	.20	.70
Queen10	.20	.70

SALSIFY—	oz.	¼ lb.	lb.
Mammoth Sandwich Island.	.10	.25	.80

SPINACH—	oz.	¼ lb.	lb.
Round Leaved20
Victoria20
New Zealand50
Bloomsdale Savoy20

SQUASH—	oz.	¼ lb.	lb.
Giant Summer Crookneck...	.10	.20	.65
Golden Custard10	.20	.50
Sibley10	.20	.65
Golden Hubbard10	.25	.80
Hubbard10	.25	.80
Delicious10	.25	.75
Mammoth White Bush.....	.10	.20	.60

TOMATO—	oz.	¼ lb.	lb.
Sparks Earliana20	.50	2.25
Dwarf Stone20	.60	2.25
Early Detroit30	1.00
Dwarf Champion15	.60	2.00
Golden Queen15	.50
Perfection15	.45	1.50
Beauty15	.45	1.50
Stone15	.45	1.50
Ponderosa25	.75	2.75
Livingston's New Globe ..	.25	.75	2.75
Chalk's Early Jewel.....	.20	.60	1.75
Matchless20	.60	1.75
June Pink25	.75	2.50
Red Rock35	1.15	4.00

TURNIP, White Fleshed Varieties—

	oz.	¼ lb.	lb.
Purple Top White Globe...	.05	.15	.40
Early White Flat Dutch....	.05	.10	.30
Early Purple Top, Strap-leaf	.05	.10	.30
White Egg05	.10	.30
Cow Horn05	.10	.30
Seven Top05	.10	.30

Yellow Fleshed Sorts—

Yellow Globe05	.10	.30
Orange Jelly or Golden Ball.	.05	.10	.25

Ruta Bagas—

Large White05	.10	.25
Improved Purple Top Yellow	.05	.10	.30

GRASS SEED—Velvet Sod Lawn Grass, 20 lbs. to bu., 5 lbs. at 28c, 20 lbs. and over at 25c.

Lawn Grass for shaded places, 20 lbs. to bu., 5 lbs. at 32c, 20 lbs. and over at 28c.

	lb.	Ten lbs. or over.
Kentucky Blue, Fancy or double extra clean	\$0.32	\$0.30
Red Top15	.12
Red Top, Fancy23	.20
Orchard Grass22	.20
English or Perennial Rye Grass...	.10	.09
Meadow and Pasture mixtures for all kinds of soils. Write for quotations.		

CLOVER—

White Dutch40	.35
Alfalfa28	.23
Alsike22	.20
Scarlet or Crimson18	.15

MISCELLANEOUS SEEDS—

Broom Corn, Evergreen08	.06
Catalpa Speciosa	1.60	...
Kaffir Corn (Red)05	.04
Millet, German05	.03½
Millet, Japan08	.05
Rape, Dwarf Essex10	.08
Sugar Cane, Early Amber05	.04
Hairy Vetch15	.12

FLOWER SEEDS

We have supply of seeds of many hardy perennials; send us your list for quotations.

Postage extra on ¼ lb. or over.

Ageratum—Dwarf Blue, ¼ oz. 15c.
Mexican Blue, White, each, ¼ oz. 10c.

Alyssum—

Little Gem, Dwarf, white, ½ oz. 20c, oz. 30c.
Sweet, White, oz. 15c, ¼ lb. 35c.

Antirrhinum (Snap Dragon), Giant—

Pink, Scarlet, each	¼ oz.	.15
White, Yellow, each	¼ oz.	.15
Mixed	¼ oz. 10c, 1 oz.	.30

Asparagus Sprengeri—

100 seeds for 20c; 1000 for 90c.

Asparagus Plumosus Nanus—

100 seeds for 65c; 1000 for \$4.15.

ASTERS.

Aster, Lady Roosevelt—A splendid new variety. Trade pkt. 25c, ⅛ oz. 60c.

Crego Asters—Magnificent late cutting Asters. Rose, Lavender and White. Trade pkt. 35c, ⅛ oz. 85c.

Rose King—Enormous quilled flowers fine for cutting (new and very scarce). Trade pkt. 35c, ⅛ oz. \$1.00.

Violet King—Identical with the above, except in color, which is a pure violet. Trade pkt. 35c, ⅛ oz. 85c.

Royal Stripe—Large double flowers, striped blue and white, with long stems, fine for cutting. Trade pkt. 25c, ⅛ oz. 50c.

Vick's Mikado—A large graceful flower for cutting. Pink, White and Rose, each, 1-32 oz. 35c, ⅛ oz. 85c.

Lavender Gem—A splendid early pure lavender, no yellow centers, very popular with florists. Trade pkt. 35c, ⅛ oz. 75c.

Snowdrift—A fine early long stemmed, pure white. Trade pkt. 35c, ⅛ oz. 75c.

Truffaut's Paeony Flowered Perfection—

Mixed

¼ oz.	35c,	1 oz.	\$1.25
-------	------	-------	--------

Giant Comet—

Mixed

¼ oz.	35c,	1 oz.	1.25
-------	------	-------	------

Daybreak—

A fine pink flower for cutting..... ⅛ oz. .30

Purity—

White flowers similar to above.... ⅛ oz. .30

Hohenzollern—

Crimson, Pink, each	⅛ oz.	.25
Lavender, White, each.....	⅛ oz.	.25
Mixed	¼ oz. 35c.	1 oz. 1.00

Queen of the Market—

Dark Blue, Crimson, each	⅛ oz. 10c,	½ oz.	.30
Light Blue, Pink, each..	⅛ oz. 10c,	½ oz.	.30
Snowdrift, pure white..	⅛ oz. 10c,	½ oz.	.30
Mixed	⅛ oz. 10c,	½ oz.	.25

Branching—Late.

Flowers large double on long stiff stems, excellent for cutting.

White, Flesh, Pink, each	⅛ oz. 15c,	½ oz.	.50
Lavender	⅛ oz. 15c,	½ oz.	.50
Pink, Purple, each.....	⅛ oz. 15c,	½ oz.	.50
Dark Red	⅛ oz. 15c,	½ oz.	.50
Mixed	¼ oz. 20c,	1 oz.	.75

Bachelors Button—

Double	oz.	.20
--------------	-----	-----

Balsam—

Camellia flowered, double mixed.....	oz.	.40
--------------------------------------	-----	-----

Calliopsis—

Golden Wave	oz.	.15
Fine Mixed	oz.	.15
Lanceolata Grandiflora Perennial.....	oz.	.40

Canary Bird Flower—

Fine vine for basket and vases.....	oz.	.20
-------------------------------------	-----	-----

Candytuft—

Empress, very large, pure white.....	oz.	.20
White Rocket	oz.	.15
Little Prince, dwarf, large flowered white	oz.	.25

Canna—

Dwarf, Large Flowered French. Dark foliage varieties. Mixed..	oz. 15c, lb.	\$1.25
Green foliage varieties, mixed.	oz. 15c, lb.	1.25
Fine mixed, from choice collections	oz. 10c, lb.	1.00

Carnation—

Marguerite, finest mixed	¼ oz.	.25
--------------------------------	-------	-----

Celosia—			
Glasgow Prize, Dwarf, Crimson...	1/8 oz.	.20	
All-a-Glow, Dwarf, Scarlet	1/8 oz.	.20	
Empress, Semi-Dwarf	1/8 oz.	.20	
Ostrich Feather, Mixed, Tall.....	1/8 oz.	.10	
Ostrich Feather, Mixed, Dwarf.....	1/8 oz.	.20	
Centaurea—			
Gymnocarpa	1/2 oz.	.20	
Imperialis, Mixed, fine for cutting..	1/4 oz.	.10	
Margaret, White, fine for cutting..	1/4 oz.	.15	
Chrysanthemum—			
(Annual) Snowball, Double white, excellent for design work.....	1/8 oz.	.25	
Cineraria—			
Hybrida, choice mixed, trade pkt.....		.50	
Grandiflora, tall, trade pkt.....		1.00	
Cobea Scandens, Purple	oz.	.30	
Coleus Finest Hybrids—			
Mixed, trade pkt.50	
Convolvulus Major—			
Mixed	oz. 10c, 1/4 lb.	.15	
Japanese Giant Morning Glory—			
Mixed	oz. 15c, 1/4 lb.	.30	
Large Flowering Morning Glory—			
Rochester	oz.	.15	
Cosmos, Giant Fancy—			
Pink	1/4 oz. 15c, oz.	.30	
Red	1/4 oz. 15c, oz.	.30	
White	1/4 oz. 15c, oz.	.30	
Mixed	1/4 oz. 10c, oz.	.20	
Early Flowering Mixed....	1/4 oz. 15c, oz.	.40	
Cyclamen—			
Persicum Giganteum, finest mixed; 100 seeds, 40c; 1000 seeds.....		3.00	
Cypress Vine, Mixed	1/4 oz.	.10	
Daisy—			
Double Red, trade pkt.40	
Double White, trade pkt.40	
Double Mixed, trade pkt.30	
Shasta—A choice large flowered strain, comprising the Alaska, California and Westralia varieties in mixture. 1/8 oz. 20c, 1/2 oz.		.70	
Four O'Clock—			
Mixed	oz. 10c, 1/4 lb. 15c, lb.	.40	
Forget-me-not—			
Palustris	1/8 oz.	.20	
Victoria, mixed	1/8 oz.	.15	
Dissitiflora	1/8 oz.	.40	
Gaillardia Grandiflora—Perennial	oz.	.20	
Grevillea Robusta	oz.	.50	
Hollyhock—			
Choice Double Mixed	1/4 oz. 25c, oz.	.60	
Choice Double Red	1/4 oz. 25c, oz.	.75	
Choice Double White	1/4 oz. 25c, oz.	.75	
Choice Double Pink	1/4 oz. 25c, oz.	.75	
Choice Double Yellow	1/4 oz. 25c, oz.	.75	
Choice Double Maroon	1/4 oz. 25c, oz.	.75	
Mammoth Fringed Mixed... 1/4 oz. 25c, oz.		.75	
Everblooming Annual, Mixed	1/4 oz. 25c, oz.	.75	
Ipomea Grandiflora (Moonflower)	oz.	.40	
Ipomea Heavenly Blue	oz.	.50	
Ipomea Setosa	oz.	.20	
Kochia Scoparia	1/4 oz. 10c, oz.	.30	
Larkspur Perennial (Delphinium)—			
Formosum	oz.	.50	
Coelestinum	1/4 oz.	.40	
Choice Hybrids, Mixed....	1/4 oz. 15c, oz.	.40	
Lobelia—			
Erinus Speciosa, Deep Blue, trailing variety	1/4 oz.	.20	
Crystal Palace Compacta, best for bedding	1/8 oz.	.20	
Cardinalis, Scarlet, Perennial.....	1/8 oz.	.30	
Syphilitica, Blue, Perennial	1/8 oz.	.20	
Marigold—			
Pride of the Garden, double.....	oz.	.40	
Double African	oz.	.15	
French Double and Single Mixed.....	oz.	.15	
Maurandia—			
Mixed, trade pkt.25	
Mignonette—			
Machet	oz.	.25	
Grandiflora, large flowering..oz. 10c, 1/4 lb.		.15	
Allen's Defiance	oz.	.40	
Nasturtium, Tall or Climbing—			
Jupiter, Large Yellow.....oz. 10c, 1/4 lb.		.15	
Prince Henry	oz. 10c, 1/4 lb.	.15	
Coccineum, Scarlet	oz. 10c, 1/4 lb.	.15	
Atropurpureum, Crimson ...oz. 10c, 1/4 lb.		.15	
Vesuvius, Rose, dark foliage	oz. 10c, 1/4 lb.	.15	
King Theodore, Crimson, dark foliage	oz. 10c, 1/4 lb.	.15	
Tall, choice mixed...oz. 10c, 1/4 lb. 15c, lb. 50c.			
Nasturtium, Dwarf—			
Dwarf Mixed	lb. 45c, 1/4 lb. 15c, oz.	.10	
Aurora	1/4 lb. 20c, oz.	.10	
Beauty	1/4 lb. 20c, oz.	.10	
Pearl, White	1/4 lb. 20c, oz.	.10	
Golden King, Yellow.....	1/4 lb. 20c, oz.	.10	
Coccineum, Scarlet	1/4 lb. 20c, oz.	.10	
King Theodore, Maroon... 1/4 lb. 20c, oz.		.10	
Empress of India.....	1/4 lb. 20c, oz.	.10	
King of Tom Thumbs, Scarlet	1/4 lb. 20c, oz.	.10	
Nicotiana Affinis	1/8 oz.	.20	
Superb Giant Pansies—			
Choice Mixture	1/4 oz. 90c, oz.	\$3.00	
Giant Curled Masterpiece.....	1/4 oz.	1.00	
Giant Mad. Perrett	1/4 oz.	.50	
Giant Pres. Carnot	1/4 oz.	.50	
Giant Pres. McKinley	1/4 oz.	.50	
Andromeda	1/8 oz.	.75	
Bridesmaid	1/4 oz.	.50	
Prince Henry	1/4 oz.	.60	
Giant Yellow	1/4 oz.	.50	
Giant White	1/4 oz.	.40	
Giant Beaconsfield	1/4 oz.	.40	
Giant Striped	1/4 oz.	.40	
Giant Black	1/4 oz.	.40	
Giant Peacock	1/4 oz.	.50	
Giant Adonis	1/4 oz.	.40	
Giant Ruby	1/4 oz.	.75	
Our Excelsior Strain. Thick velvety petals and a fine mixture of colors. 1/4 oz. 75c, oz.		\$2.00	
Emperor Frederick	oz.	1.00	
Emperor William, Deep Blue.....	oz.	1.00	
Cardinal	oz.	1.00	
Fairy Queen	oz.	.75	
Lord Beaconsfield	oz.	1.00	
King of the Black.....	oz.	1.00	
White	oz.	1.00	
Yellow	oz.	1.00	
Mahogany Colored	oz.	.75	
Striped and Mottled.....	oz.	.75	
Havana Brown	oz.	.75	
Silver Edge	oz.	.75	
Quadricolor	oz.	.75	
Fire King	oz.	.75	
Extra Choice Mixed.....	oz.	.75	

Petunia—

Double Giant Flowered Grandiflora and Fringed Mixed	1000 seeds	1.25
Giant Ruffled, trade pkt.....		1.00
Single large flowered, Fringed, trade pkt.		.50
Giants of California, trade pkt.....		1.00
Rosy Morn, Rosy pink, white throat.	1/8 oz.	.40
Single Striped and Blotched	1/4 oz.	.25
Single Mixed	1/4 oz.	.15
Howard's Star	1/4 oz.	.40

Phlox Drummondii Grandiflora—

Pure white	1/4 oz. 20c, oz.	.75
Scarlet	1/4 oz. 20c, oz.	.75
Striped Red and White.....	1/4 oz. 20c, oz.	.75
Crimson	1/4 oz. 20c, oz.	.75
Rose	1/4 oz. 20c, oz.	.75
Mixed	1/4 oz. 15c, oz.	.50

Phlox—

Starred and Fringed	1/4 oz. 20c, oz.	.60
Dwarf Mixed	1/4 oz.	.30

Pink (Dianthus)—

Snow Queen—Fine Double White.....	oz.	1.00
Fireball—Double Scarlet	oz.	1.00
Chinensis—Choice Mixed Double	oz.	.30
Heddewigii—Double Mixed	oz.	1.00
Annual Varieties—Double Mixed	oz.	.50
Annual Varieties—Single Mixed	oz.	.40

Poppy (Annual)—

Shirley	1/2 oz.	.10
Mikado	1/2 oz.	.10
Snowdrift	1/2 oz.	.10
Paeony Flowered Scarlet	1/2 oz.	.15
Paeony Flowered Mixed	oz.	.10
Tulip Flowered	1/2 oz.	.20
Carnation Flowered	oz.	.10
Double Mixed	oz.	.10
Single Mixed	oz.	.10

Poppy (Hardy Perennial)—

Bracteata, Large Crimson	1/4 oz.	.15
Oriental, Large Scarlet	1/4 oz.	.25
Iceland, Mixed	1/4 oz.	.15

Portulaca—

Double Mixed, trade pkt.....		.30
Single Mixed, trade pkt., 10c.....	oz.	.25

Primula Sinensis Fimbriata—

Choice Mixed, trade pkt.....		1.00
------------------------------	--	------

Primula Obconica—

Grandiflora, trade pkt.50
------------------------------	--	-----

Primula Forbesi—

Baby Primrose, trade pkt.....		.50
-------------------------------	--	-----

Pyrethrum Roseum—

Single Grandiflora	1/4 oz.	.25
Double, trade pkt.		1.00

Ricinus Zanzibarensis—

Mixed	oz. 10c, 1/4 lb. 15c, lb.	.50
-------------	---------------------------	-----

Salvia—

Splendens—Trade pkt. 25c.....	oz.	1.00
Clara Bedman.....trade pkt. 40c, 1/4 oz.		.60
Zurich.....trade pkt. \$1.00, 1/4 oz.		2.00

Scabiosa—Mixed

	1/4 oz.	.10
--	---------	-----

Smilax

	oz. 30c, 1/4 lb.	1.00
--	------------------	------

Stocks—

Dwarf Large Flowering Double Ten Weeks, Mixed	1/8 oz.	.25
Brompton	1/8 oz.	.35
Giant Perfection Ten Weeks, Mixed..	1/8 oz.	.30
Princess Alice, White.....	1/8 oz.	.35
Snowflake, for forcing.....	1/8 oz.	.75

Sunflower (Helianthus)—

Large Russian	lb.	.10
Double Chrysanthemum	oz.	.15

Spencer Sweet Peas—

For description of Spencer Type Sweet Peas, see page 54 of our No. 2 Catalogue.

	oz.	1/4 lb.	lb.
Apple Blossom Spencer15	.45	1.60
White Spencer15	.40	1.10
Asta Ohn Spencer.....	.20	.60	2.00
Aurora Spencer20	.60	2.00
Captain of the Blues Spencer	.20	.60	2.00
Etta Dyke Spencer.....	.20	.60	2.00
Evelyn Hemus Spencer.....	.20	.60	2.00
Florence Morse Spencer....	.15	.40	1.50
George Herbert Spencer....	.15	.40	1.10
George Stark Spencer.....	.20	.60	2.00
Helen Lewis Spencer.....	.15	.40	1.50
King Edward VII Spencer..	.15	.40	1.50
Masterpiece Spencer20	.60	2.00
Mrs. Jos. Chamberlain Spencer	.20	.60	2.00
Othello Spencer15	.40	1.50
Primrose Spencer15	.40	1.10

Grandiflora Sweet Peas—

America05	.10	.35
Coccinea05	.10	.30
Dorothy Eckford05	.10	.35
Hon. Mrs. E. Kenyon.....	.05	.10	.30
Helen Pierce05	.10	.35
Frank Dolby05	.10	.35
Janet Scott05	.10	.30
Jessie Cuthbertson05	.10	.30
Katherine Tracy05	.10	.30
King Edward VII.....	.05	.10	.30
Lord Nelson05	.10	.30
Lord Roseberry05	.10	.35
Lovely05	.10	.35
Mrs. Geo. Higginson, Jr....	.05	.10	.35
Mrs. Walter Wright05	.10	.35
Nora Unwin05	.10	.35
Othello05	.10	.30
Phenomenal05	.10	.30
Prima Donna05	.10	.35
Queen Alexandra05	.10	.35
Salopian05	.10	.30
Senator05	.10	.30
Sybil Eckford05	.10	.30
White Wonder05	.10	.35

Christmas Flowering or Greenhouse Types—

Earliest of all10	.25	.75
Mont Blanc10	.25	.75
Earliest White15	.35	1.00
Christmas Pink15	.35	1.00
Christmas White15	.35	1.00
Mrs. Wm. Sim.....	.15	.35	1.00
Mrs. C. H. Totty.....	.15	.35	1.00
Eckford's Mixed05	.10	.30
Spencer Mixed10	.25	.85
Cupid Mixed10	.25	.75

Sweet William—

Single Mixed	oz.	.30
Double Mixed	oz.	.80

Thunbergia

Verbena (Mammoth Flowered)—

Blue and Purple Shades....	1/4 oz. 35c, oz.	1.00
Pink	1/4 oz. 35c, oz.	1.00
Scarlet	1/4 oz. 40c, oz.	1.00
White	1/4 oz. 35c, oz.	1.00
Striped	1/4 oz. 35c, oz.	1.00
Mixed	1/4 oz. 30c, oz.	.75

Wallflower—

Double Mixed	1/8 oz.	.35
Single Mixed	1/8 oz.	.10

Wild Cucumber

Zinnia—

Double Scarlet, Purple, each.....	oz.	.40
Double Pure White, Orange, each.....	oz.	.40
Double Curled and Crested.....	oz.	.40
Extra Double Tall Mixed	oz.	.25
Extra Double Pompone Mixed	oz.	.35
Double Zebra or Striped Mixed.....	oz.	.40